



THE HISTORIC COUNTY

Volume 11 ■ Issue 1
Spring 2011

NEWSLETTER OF THE
PASSAIC COUNTY HISTORICAL SOCIETY

Bloomingtondale • Clifton • Haledon • Hawthorne • Little Falls • North Haledon
Passaic • Paterson • Pompton Lakes • Prospect Park • Ringwood • Totowa
Wanaque • Wayne • West Milford • Woodland Park

IN THIS ISSUE

Floor Improvements	1
Calendar of Events	2
President's Message	3
Festive Events	4-5
"Return of a King" Exhibit	6
Victorian Tea Returns.....	7
Trolley Company Talk	7
Spring Concerts Series	7
History Day Presented.....	8
Historic Conference Table Returns to Castle	9
Lambert Tower at War	10-11
Totowa Falls Picnic	11
Library Mission Expanded	12
5th Annual Antique Show	12

MARK YOUR CALENDAR

See page 2 for more information about these and other upcoming events.

Afternoon Tea at Lambert Castle
April 14 - 17

Society Annual Meeting
May 4

Antique Show Preview Night
May 20

Antique Show and Sale
May 21-22

FLOOR IMPROVEMENTS UNDERWAY AT LAMBERT CASTLE

Taking advantage of the winter snow storms and ensuing low museum attendance, floor restoration work in the museum was resumed in January.

Two years ago the Board of Trustees authorized the establishment of a floor improvement fund to be subsidized by apportioning a percentage of the proceeds from each major fundraiser. Since 2009 over \$18,000 has been raised and dedicated for this purpose.

The fund was initially used in April 2010, when the first museum floor area – the Breakfast Room – was refinished. Work was suspended until early this year, when staircase steps, treads, risers and landings were reinforced and restored to a beautiful finish. One of the landings was in such poor shape it was completely replaced.

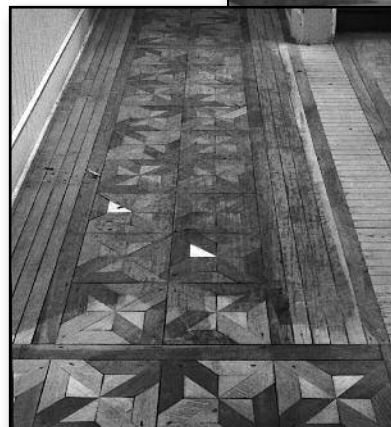
Immediately following was restoration work of the second floor Gem Room and corridors, which were badly damaged. To avoid hazardous, slippery floors that show scuff marks and usage, all the floors have been given a low-sheen satin finish.

The museum will be closed from March 28

through April 5 to complete the first floor Dining Room, Drawing Room and Museum Store.

Additionally, attractive and durable carpeting has been selected for installation on the staircase, and runners are planned for highly trafficked areas during peak visiting periods.

Floor improvements thus far have been remarkable. Future plans are to complete the remaining public rooms when the museum schedule permits and funds are available.



Before and after refinishing of second floor balcony flooring.

**PASSAIC COUNTY
HISTORICAL
SOCIETY**

LAMBERT CASTLE
3 Valley Road
Paterson, NJ 07503-2932

Museum: (973) 247-0085
Library: (973) 278-9337
FAX: (973) 881-9434

E-mail:
lambertcastle@verizon.net

Website:
www.lambertcastle.org

OFFICERS

Geraldine Mola
President

John Boyko
First Vice President

Robert Hazekamp
Second Vice President

Maryjane Proctor
Treasurer

Sharon Briggs
Secretary

TRUSTEES

Maria Carparelli
Joseph Leone
Helen Mault
Dolores D. Most
Lois Paterson
Jean Pellegrino
John Pullara
Mario Rosellini
Claire Salviano
Edward A. Smyk
Linda Spirko
John J. Veteri, Jr.
Lorraine Yurchak

**HONORARY LIFE
TRUSTEES**

Norman Robertson
Edward A. Smyk

HONORARY TRUSTEE

Hazel Spiegelberger

STAFF

Dorothy Decker
Administrative Assistant
Henrietta Weiss, *Head Docent*
William Collins, *Docent*
Robert Esik, *Docent*

Lambert Castle, a picturesque 1892 Victorian mansion located on the Garret Mountain Reserve, is on the National Register of Historic Places. The Castle is operated and managed by the Passaic County Historical Society, a not-for-profit 501(c) educational institution.

TRUSTEES ELECTED TO FILL BOARD VACANCIES

by Sharon Briggs, Secretary

Since our election in May, the Society has accepted, with regret, resignations from three Board members unable to complete their terms: Barbara Speziale; Larry Korona, who relocated to Oklahoma; and Irene Hunt, who will continue to chair the successful Enrichment Series she implemented. Elected to replace them are three new Trustees who bring their special talent to the furtherance of our mission.

Over the last 40 years, **Linda Spirko** and her husband, Joseph, turned a small produce stand in Clifton into Ploch's Garden Center. Her love of nature led to the purchase of the Strawberry Blossom Farm in Wayne. Her love for the arts was perpetuated as a founding advisory board member for the Clifton Arts Center and active membership in the New Jersey Botanical Gardens. Linda has contributed to landscaping at the Castle.

Lois-Ann Paterson, Assistant Principal at Passaic County Technical Institute, has spent 20 years studying and teaching history. She has kept her love for history close to her heart as she advanced her career in the educational field. During his time she earned well-deserved memberships in history and education-based international honor organizations. And now, Lois-Ann has increased her role from member to Trustee of the Passaic County Historical Society. It is not hard to believe that one of her passions is visiting museums.

Helen W. Mault retired from the Wayne Board of Education after a lengthy career as an Educational Media Specialist. Following her retirement she extended this path as a library volunteer in her local elementary schools. Not only has she been active in numerous community and political organizations, she has held leadership roles in all of them and life member in some. Membership in the Passaic County Historical Society and the Genealogy Club since 2000 is included among her activities. It is no surprise to see computer literacy as one of her many skills and reading as one of her interests. We see a contributor to the Library Committee on the horizon.

The next regular election of trustees and officers will take place at the Annual Meeting of the Society on Wednesday, May 4, 7 pm at Lambert Castle. A slate of nominees will be announced prior to the meeting.

SPRING CALENDAR OF EVENTS

- Thru March 27** Exhibit: "Return of a King," third floor gallery.
- Thru March 27** Closing Reception for "Return of the King" Exhibit. Special guest speaker, winners of essay contest, light refreshments, 4pm, Lambert Castle.
- March 2** Quarterly Meeting, 7 pm, Lambert Castle. PROGRAM: Rev. Kenneth Clayton, pastor of St. Luke's Baptist Church in Paterson and President of the Paterson NAACP, presenting "History of the Civil Rights Struggle in our Current Context."
- March 12** Genealogy Club Meeting, 10 am, Lambert Castle. PROGRAM: "Information Exchange."
- March 28 – April 5** Museum Closed for Floor Renovation.
- April 9** Genealogy Club Meeting, 10 am, Lambert Castle. PROGRAM: "Genealogy Myths," presented by *Beverly Yackel*.
- April 14 – 17** Afternoon Tea at Lambert Castle, Noon and 3 pm daily. \$35, advance reservations required. PROGRAM: "The Secret Language of the Fan."
- May 4** Annual Meeting, 7 pm, Lambert Castle. Reports, elections, and PROGRAM: "Along the North Jersey Rapid Transit," presented by *Phil Jaeger*, historian and former PCHS Trustee.
- May 14** Genealogy Club Meeting, 10 am. PROGRAM: "Letters Home," a dramatic first-person portrayal of a Union Civil War Soldier, presented by *Mark Simmons*.
- May 14** PCHS Concert Series, 5 pm, Lambert Castle. Chamber Music led by *Andrew Silbert*, member of the Board of the Central Jersey Symphony Orchestra.
- May 20** Antique Show Preview Night, Lambert Castle, 7 pm, light refreshments. \$15.
- May 21 – 22** Antique Show and Sale, Lambert Castle, 10 am to 5 pm daily, \$5 admission.
- June 4** PCHS Concert Series, *Drew Peterson*, Classical Piano, Lambert Castle, 5 pm, \$15.
- June 11** Genealogy Club Bus Trip, destination and ticket price to be announced.
- June 11** PCHS Concert Series, *Fran DePalma Iozzi* and *Dr. Louis A. Iozzi* performing a classical music concert with accompanying artists on the violin and cello, 7 pm, \$15.
-



From the President's Desk... Geraldine Mola

It has been quite a hectic time since I accepted the gavel in May, in no small measure because the Society is working without a director. We hope to resolve that matter as soon as possible, but until a full staff is put in

place, Trustees and willing members will be pitching in to do some of the work ordinarily handled in the office.

Dorothy's Steady Hand. Actually, the office has been running smoothly since our administrative assistant Dorothy Decker has been assuming certain tasks as needed for now. Conscientious and capable, she is keeping the museum, the building and all of us "on track" in her steady, dedicated way.

Helen Mault's Donation of Sound. Thanks to a generous donation by long-time member and new Trustee Helen Mault, the Society now has a wonderful new sound system.

Always present at meetings and Society events, Helen was frustrated with the difficulties we have had amplifying business meetings or program speakers at the Castle. Taking the matter in hand, she donated the funds to purchase a quality system. Appropriate equipment was ordered and is now in place, and we are most appreciative of this valuable gift to the Society. For this we extend a resounding chorus of thanks to Helen.

The Holiday Boutique Dilemma. It was startling to learn how much energy and time is necessary to prepare for, handle, and clean up after the Holiday House Boutique, a Society mainstay for 23 years. I've heard praise as well as criticism of the event, and there are many arguments on both sides.

Why do we continue to host the Boutique every year, some ask. For the one-month event, we lose over two months of regular museum activity. There are no exhibits, museum hours, castle tours or programming during that time. Everything stops.

The Boutique is certainly hard on the building, the floors, and even the plumbing (which was never built to handle the massive number of people that move through the rooms during the Boutique). Every time we empty the Castle for the event – moving furniture, taking down paintings, storing artifacts – there's a chance that something valuable will be damaged.

Moreover, the Boutique requires long hours for the staff, many volunteers, constant recordkeeping, extra security, serious monitoring to keep halls, rooms, storage, food and restroom areas clean and safe, and immediate action when elevators, power or plumbing stops working.

Why, then, with so much worry and work, does the Society do it? The reasons are manifold.

For one thing, the event brings in 7,000 people annually, many of them new visitors, many who might never have stepped into the Castle for any other reason. From Holiday House patrons, we've gained members, built attendance at other Society events, and received monetary donations. Usually, a walk through the Castle leaves a lasting and positive impression, and that's a wonderful end result.

The strongest reason, though, and what gets us motivated every November is the money the event brings in. This year, the Society realized close to thirty per cent of its operating budget from admission tickets, museum store sales, promoter and cafe stipends, and raffle profit. That's a tremendous amount of income for the Society from this one event.

Yes, there are plenty of reasons to close down the Boutique, but unless the Society can find another way to bring in equal funds to operate the museum and library and to continue quality programming, the Boutique will likely remain in operation.

RECOGNITION AND SPECIAL THANKS are extended for extraordinary work on behalf of the Society in recent months:

- **Holiday Event Volunteers** (listed, box right) contributed to some or all of our holiday events— the Holiday Boutique, Wine Tasting, and Candlelight Tour— doing an incredible number of work hours and raising lots of funds for the Society.
- **Bob Hazekamp** was in charge of emptying the Castle and putting it back together before and after the Boutique, and he quietly did this enormous job well.
- **Bob and Agnes Esik.** Bob, with his wife Agi as his assistant, produced the lovely Candlelight Tour for its second year, finding the floral designers and this year the bakers for the beautiful gingerbread house exhibit.
- **John and Marian Boyko** with enthusiasm and energy assisted wherever needed, including changing light bulbs, moving furniture and cleaning up. If a job needs doing, they're first in line to help.
- **Joe Leone** jumped in to chair the Wine Tasting event and did a fine job.
- **Lorraine Yurchak**, Museum Store Chairwoman, with the selection of new and interesting merchandise and a flair for displaying it, doubled the holiday income from the store.
- **Ed Smyk** is to be commended for his foresight and determination to bring a conference table and chairs finally back to Lambert Castle.

HOLIDAY EVENT VOLUNTEERS

Kathy Altheidt
Dorothy Androsko
Doris Bauer
Ken Beckvermit
John Boyko
Marian Boyko
Sharon Briggs
Maria Carparelli
Maureen Conklin
Dorothy Decker
Grace DelGuercio
Silvia DeVries
Agnes Esik
Robert Esik
Gloria Fracalossy
Dorothy Galluccio
Marilyn Green
Dorothy Green
Carmela Grimaldi
Robert Hazekamp
Irene Hunt
Ellen Kiraly
Joseph Leone
Adele Levy
Christine Lipari
Anna Rose LoPinto
Peggy Loproto
Vincent Loproto
RoseMarie Lyons
Seraphia McCormick
Thomas McMinn
Carol Melnyk
Geri Mola
Dolores Most
Marie Nativo
Christine Peragallo
Joanne Polner
Maryjane Proctor
Angela Puleo
John Pullara
Joan Reid
Mario Rosellini
Claire Salviano
Joan Sanford
Elsie Siemes
Barbara Swistok
Jennie Swistok
Elinor Wellner
Elinor Yanics
Lorraine Yurchak

FESTIVE EVENTS BRING MANY TO CASTLE

The highly successful one-month Holiday Boutique in November brought over 7,000 shoppers to Lambert Castle. When it ended on November 28, Lambert Castle was stripped bare of sales merchandise and artistically redecorated to extend the holiday through January 9, 2011.

On Friday, December 10, a holiday wine tasting party was held for a decidedly "hip" crowd. Guests enjoyed wine, gourmet hors d'oeuvres and desserts, and a pleasant social evening.

On Saturday and Sunday, December 11 and 12, Lambert Castle welcomed guests to the 2010 Candlelight Tour. Attendees explored the beautifully decorated castle, heard live piano music, and were treated to hot cider and holiday cookies. Thereafter, through the new year, sans music and refreshments, the holiday bedecked Castle was open for viewing.

Remarkable Holiday Designs

The castle was memorably decorated on every floor. The main rooms were transformed with beautiful and elaborate floral decorations designed and donated by local floral designers.

- **Ploch's & Strawberry Blossom Home Centers** of Clifton and Wayne designed the Front Door, Atrium Entrance, Atrium Tree, and Balconies
- **Morningside Greenhouse** of Haledon decorated the Entrance Hall and Dining Room

- **Dee's Florist**, West Paterson, decked the Music Room
- **Amazonas Exotic Floral Designs** of Little Falls beautified the Drawing Room
- **Bosland's Flower Shop**, Wayne, trimmed the Breakfast Room
- **Warchola's Holiday Designs**, ornamented the Stairwell, and First and Second Floor Landings.
- **All for a Rose** of Totowa and **Halka's Florist**, Clifton, donated poinsettias throughout the Castle.

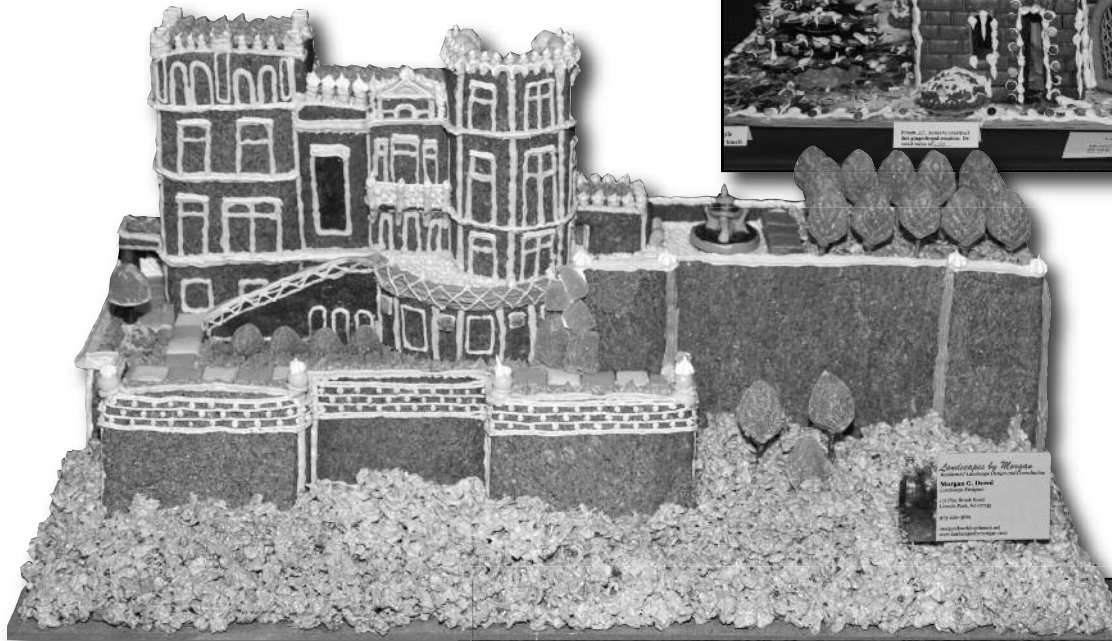


Gingerbread Creations

A creative addition to the Tour this year was an exhibit of magnificent gingerbread houses designed by area bakers. The tantalizing aroma of gingerbread drew guests to the second-floor round room, where they were displayed.

Two of the seven houses were related to Lambert Castle: **Morgan Dowd** of Landscapes by Morgan in Lincoln Park made a replica of Lambert Castle, and Lambert Castle Gatehouse was created by the **Passaic County Technical Institute Culinary Arts Department Bake Shop**.

Other participating bakers were **Cake Specialty** of Hawthorne, **Calandra's Bakery** of Caldwell; **Gourmet Desserts Outlet** of Clifton; **Palermo Bakery** of Ridgefield Park; and **Peluso's Catering** of Clifton.



“RETURN OF A KING” EXHIBIT DEBUTS AT CASTLE

On January 17, 2011, the national holiday that marks the birthday of renowned Black leader Dr. Martin Luther King, the Passaic County Historical Society ushered in Black History Month a few weeks early with the exhibit opening of “Return Of A King.” The show highlights the Paterson visits of Reverend Martin Luther King, Jr. and Rosa Parks.

The exhibit, installed in Lambert Castle’s third floor gallery, also celebrates the recent historic designations of two Paterson churches, the Bethel AME Church and the Community Baptist Church of Love, which played an important part in local Black history when King and Parks addressed area residents. The show was produced by guest curator Jimmy Richardson.

Scheduled to run until Sunday, March 27, the exhibit is funded, in part, by grants from PSE&G and the Passaic County Cultural and Heritage Council at Passaic County Community College, through a general operating support grant from the New Jersey Historical Commission, a division of the Department of State.

Opening Reception Well-Attended

The Opening Reception at 3 p.m. was a very successful affair, with every seat filled in the Atrium for the program, and a spill-over crowd watching from the second floor balcony.

Approximately 150 attended, including an impressive number of public officials on hand to present citations or proclamations. These included Congressman Bill Pascrell, who addressed the group, as did State Senator John Girgenti’s representative, County Freeholder Director Terry Duffy, County Freeholder and Woodland Park Mayor Pat Lapore, former Freeholder Norm Robertson, and Paterson Mayor Jeff Jones.



Other officials present included PCHC Director Gianfrano Archimedes, Passaic County Clerk to the Freeholder Board Louis Imhof III, and Paterson Councilmen Andre Sayegh, Anthony Davis, Bengie Wimberly and Kenneth Morris.

The religious community was also well represented, including Rabbi Israel Dressner of Wayne, who had personally known the Reverend Martin Luther King, Jr. and gave the keynote address, and the Reverends Theresa Nance, who was mistress of ceremonies, Kenneth Clayton, Frederick La Garde, John C. Reynolds, Alan Boyer and Linda Stincil.

Following the program, guests were treated to a reception that included sandwiches, salads, soft drinks on the second floor, and coffee, tea and a piece of birthday cake for Dr. King on the third floor. Guests seemed very pleased with the event.

Essay contest winners Announced

An essay contest related to the “Return Of A King” exhibit was held for students in grades 6-12 of the Paterson School system. Students were asked to explain “Why Civil Rights Leaders Martin Luther King, Jr. and Rosa Parks’ visits to Paterson should be memorialized and celebrated as part of Paterson’s legacy.”

A panel of judges appointed by the Paterson Board of Education chose four outstanding essays from 100 entries. Winners were Zawatti Hodges, Yessenia Ruiz and La’krystal Singletary from the Rosa Parks High School of Performing Arts, and Genesis Diaz of School No. 18.

Winners received photography classes at Unique University in Fairfield and citations from Congressman Bill Pascrell, the Passaic County Freeholder Board, and Paterson Mayor Jeff Jones. Winning essays are available to read at the exhibit.

Pictured (top): Rev. King speaking in Paterson, (middle) Opening Ceremony at Lambert Castle, (bottom) Rosa Parks.

PUBLIC INVITED TO CLOSING RECEPTION

To mark the close of the “Return Of A King” exhibit, a program and reception will be held at Lambert Castle on Sunday, March 27 at 4 pm.

Guest speaker will be former Paterson Councilwoman Marilee Jackson, who has served as Council President and director of Paterson Community Development. She will speak about Reverend Martin Luther King’s visit to Paterson and the importance of the historic designations recently granted to Bethel AME Church and the Community Baptist Church of Love.

A highlight of the program will be guest curator Jimmy Richardson’s presentation of historic designation records to the Passaic County Historical Society. These materials are expected to be preserved and made available to the public in the Society Library.

Also planned is the introduction of Paterson students Zawatti Hodges, Yessenia Ruiz, La’krystal Singletary, and Genesis Diaz – winners of the essay contest, “Why Civil Rights Leaders Martin Luther King, Jr. and Rosa Parks’ visits to Paterson should be memorialized and celebrated as part of Paterson’s legacy.”

Light refreshments will be served following the program. The public is invited to attend.

PREPARING FOR TEA AT LAMBERT CASTLE

Tea sets are coming out of cupboards, linens are being starched and ironed, and plans are being readied for the fifth annual Afternoon Tea at Lambert Castle.

The Tea committee is already hard at work preparing to serve and entertain hundreds of guests Thursday to Sunday, April 14-17. High SocieTea House in Wayne caters the event, bringing in tea, scones, savories and desserts daily. Everything else is handled by volunteers, who set the tables, wash the dishes, and launder the linens daily to handle two sittings a day for four days.

Before the event, volunteers select a program theme, obtain gifts for prizes, design and mail invitations, and work to publicize the event. Considerable attention is given to providing a unique prize experience, with most gifts awarded silently and assuring that everyone who buys a chance wins a gift.

The Tea was first held in 2007 with seating for a maximum of 75 guests, but so many replied that a second seating was set up shortly before the event for the overflow. Despite that, many were turned away.

Since then, the event has grown annually, and last year the Society welcomed over 600 for Tea. To meet the demand, extra tables have been artfully added to the rooms to carefully maintain the intimacy of a proper Tea.

An important attraction of the event is the program, which has, in the past, included the history of tea, the story of Lambert Castle, a show of Victorian fashions, and a presentation of Victorian songs.

This year guests will learn about "The Secret Language of the Fan," which was a delightful method of communicating – and flirting – during the Victorian era.

Help is welcome in planning or handling the many tasks at the Tea, and any member or friend of the Society (or Tea lover) is invited to participate. To volunteer, call 973-247-0085 ext. 200. Please leave your phone or e-mail address.

To attend the Tea, reserve your seats early at 973-247-0085 ext 200 to be sure the day and sitting you prefer is available.



JAEGER TO PRESENT TALK ON TROLLEY COMPANY

Historian Phil Jaeger will depict the heyday of the local trolley in his lecture, "Along the North Jersey Rapid Transit," which he will present at the PCHS Annual Meeting to be held at Lambert Castle on Wednesday, May 4, at 7 pm.

In the early 20th century, when Paterson was the "go-to" shopping destination, trolleys were an important means of local transportation. The North Jersey Rapid Transit Company, which existed from 1910 to 1928, ran from Paterson to Suffern, traveling through East Paterson (now Elmwood Park), Fair Lawn, Glen Rock, Ridgewood, Ho-Ho-Kus, Waldwick, Allendale, Ramsey and Mahwah.

Jaeger, who has walked the entire length of the former trolley line, will take us on a then-and-now tour. With historic and current photos, he will treat the audience to a ride on this trolley company as it was a century ago and then compare it with the route as it appears today.

A retired mathematics teacher and local historian, Jaeger is a trustee of the Cedar Grove Historical Society, a former trustee of the Passaic County Historical Society, and a member and former director of the Canal

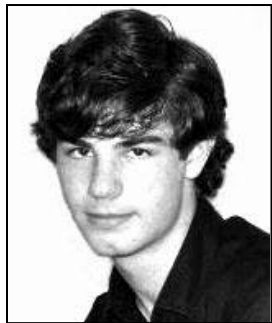


*North Jersey Rapid Transit Trolley en route from Paterson on the Broadway Bridge in East Paterson. View from River Road, c.1920.
Photo courtesy of the Elmwood Park Historical Society.*

Society of New Jersey. He is the author of two books: *Montclair: A Postcard Guide to Its Past* and *Cedar Grove*. He lectures throughout the state on topics ranging from castles of New Jersey to the Morris Canal, and has been a frequent speaker at Lambert Castle.

CONCERT SERIES SET FOR SPRING

Lambert Castle will again welcome spring with an exciting Concert Series. Instituted last spring, this year's concerts will take place on Saturdays in the late afternoon or early evening.



Pianist Drew Petersen

Returning for an encore performance is young pianist, Drew Petersen, 17, an internationally acclaimed performer who enthralled the 2010 castle audience with his remarkable presentation of Schumann, Beethoven and Chopin. He will perform at Lambert Castle on Saturday, June 4 at 5 p.m.

The Society will also welcome back pianist Fran De Palma Iozzi and Dr. Louis A. Iozzi,

saxophonist, who last year presented a "Classical Carousel," which delighted the audience with their musical journey from Bach to Gershwin. They will be joined by other performers including a violinist and young cellist. This performance, to be presented on Saturday, June 11 at 7:30 pm, is not to be missed.

The opening concert of the 2011 season will be held May 14 at 5 pm. Andrew Silbert, a member of the Board of the Central Jersey Symphony Orchestra, will present Chamber Music with a group of accomplished colleagues. Listening to their beautiful musical interpretations will be the perfect way to begin our series.

Plan to attend these concerts. The acoustics in beautiful Lambert Castle are superb and the setting is perfect for a wonderful listening experience. Concert admission is \$15, or \$40 for all performances if paid in advance. For information or tickets, call 973-247-0085, ext 200.

SOCIETY HOSTS SECOND COUNTY-WIDE HISTORY DAY

On Saturday, October 2, the Passaic County Historical Society played host to the county's historical and cultural community at its second annual History Day at Lambert Castle. Free and open to the public, the event exceeded expected attendance with over 400 visitors – adult and children – from throughout Passaic County and the surrounding region.

Participants included thirty-two local historians, historical societies, cultural organizations and museums that presented table displays of local history and projects, answered queries, and distributed information in the Atrium and first floor museum rooms. Of these groups, Coro d'Italia contributed an exhibit of Italian culture, photographs and costumes in a second-floor gallery, and the Rhode Island Company B Volunteer Civil War re-enactors were on the grounds demonstrating Civil War life.

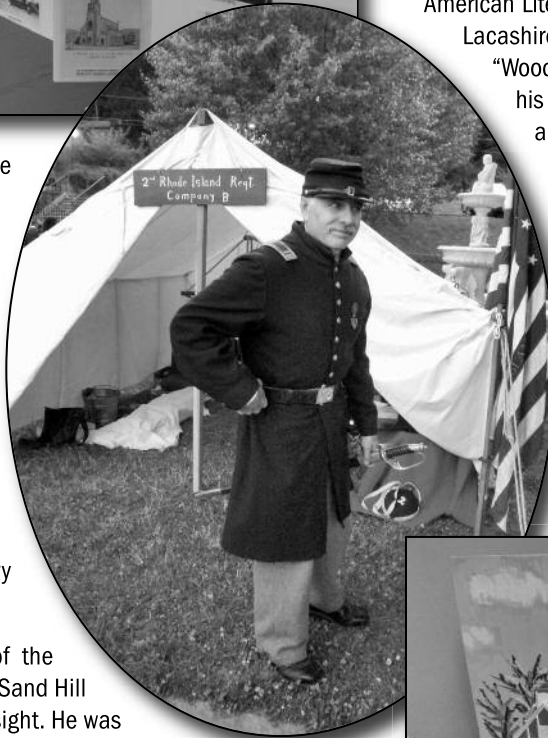
Children's activities were also provided, including hands-on Victorian games led outdoors on the Castle Green by the Wayne Historical Society, and a PCHS indoor activity station, where children experienced old-fashioned games such as Jacks, Pick-up Sticks and cardboard looms on which they wove yarn and become more aware of Paterson's great industrial history.

A central part of the day was a lecture series with Paterson and Passaic County history as the central theme.

- Discussing ancient local Indian tribes of the Passaic River, Dr. Samuel W. Beeler, Jr. of the Sand Hill Band of Lenapi Indians, presented his insight. He was joined by Tony DeCondo, retired educator and volunteer archeologist at Paterson Museum, who spoke of the skills and efficiency of native inhabitants and demonstrated the use of original and historically replicated tools and useful objects.
- Jack Goudsward, author of *The World War II Defense of Paterson, New Jersey*, presented a lecture on the defense of Paterson and the surrounding area during WWII, including personnel of the 67th and 502 Coast Artillery and their buildings, bunkers, and look-outs. He aptly illustrated with photos, maps and related memorabilia.
- Focusing on Paterson's natural Falls, Bill Bolger, Project Manager of the Great Falls National Historic Park, gave a preliminary overview and introduced Great Falls Youth Corps members, who described activities planned to support the creation of the future national park.

- Key speaker of the day was Steve Golin, Professor Emeritus at Bloomfield College and author of *The Fragile Bridge: Paterson Silk Strike 1913*, which won the Richard P. McCormick prize for New Jersey history. His program, "Justice for Immigrants during the Silk Strike of 1913 and Today," was funded by the New Jersey Council for the Humanities as part of its state-wide October Humanities Festival, "Reflections on Justice." In his lecture, Golin explained the meaning and magnitude of the 1913 Paterson silk strike, a critical event in American immigrant and labor history. He provided a historic look at the city's silk workers of the time, primarily Italian, Polish and other Eastern European immigrants, and compared their struggles to the common problems of today's immigrant population.

- In the final program of the day, William Kaufman, Professor of American Literature and Culture at the University of Central Lancashire in England, presented a musical history, "Woodie Guthrie, Hard Times and Hard Traveling." With his performance on guitar as well as photo slides, anecdotes, and humor, Kaufmann told the story of the dust-bowl and the depression years through the keen lyricism, perception, and understanding of Woody Guthrie. Funded by the American Labor Museum (the Botto House), the program was an interesting link between the labor struggles of the 1913 silk mill strikers and the great efforts of all Americans to work and live in a new area.



Overall, History Day was a huge success as measured by the inspiring participation and support of the Passaic County history and cultural community, as well as the excellent response and attendance of the general public. Because of its success, the Society plans to repeat the event in October 2011.

IF THIS TABLE COULD TALK: HISTORIC CONFERENCE TABLE RETURNS TO CASTLE AFTER LONG ABSENCE

by E. A. Smyk, Passaic County Historian

Soon after Lambert Castle was cleared of merchandise left from the Society's annual Holiday House boutique, a county parks department trucked chugged its way up the Castle's serpentine driveway, parking at the front door of the once baronial residence. The park men unloaded a ten-foot long mahogany conference table with ten accompanying armchairs, hefted their burden up the grand staircase, and arranged the furniture in what was Catholina Lambert's second floor parlor. They then good naturedly departed, mission accomplished.

The day was December 6, 2010. A brisk wind lashed from Garret Mountain, and yes, it seemed like just another ordinary winter morning, but not for those who dwell in the house of history. The table and chairs, deprived of their luster through years of heavy use, were not just pedestrian items from a past age. If inanimate objects could talk, the table and chairs could recount for us the history of the development of the county park system.

The furniture made its appearance in the Castle sometime in the early 1930s, when the Passaic County park commissioners needed something both substantial and practical for their conference room. At the time, the Great Depression was ravaging the nation, millions were unemployed, and, not surprisingly, a bank in Passaic went into insolvency.

The commission's chief executive learned of the bank's plight. Furniture was among the items to be liquidated. Shortly thereafter, the table and chairs were soon accommodating the needs of the park commissioners rather than bank directors. Henceforth, the table would form the centerpiece for conversations on giving the citizens of the county a second-to-none park system, rather than bankers deliberating over loans, deposits, and collateral.

It was around this table that men like Garret A. Hobart, Jr., investment banker and son of Vice President of the United States Garret A. Hobart, Robert Dix Benson, Le Grand Parish, Louis V. Hinchliffe, and Arthur J. Sullivan planned the renovation of Lambert Castle, the historic Dey Mansion (Washington's headquarters in 1780), Garret Mountain Reservation, Goffle Brook Park, the Preakness Valley Golf Course, and various other park properties. Others who found a welcome seat at the table were distinguished public servants: Frederick W. Loede, the commission's Cornell educated chief executive, and Charles A. Winans, the consummate

journalist who served as the agency's diligent number two man. Here, at this table, a glorious well-conceived park system received form and substance through the collective efforts of imaginative, public spirited individuals.

At this table, the commission's landscape architects, Olmsted Brothers of Brookline, Massachusetts spread forth their magnificent park designs, including a graceful, 18th-century garden scheme which placed the Dey Mansion in a setting of unsurpassed beauty. Here too, in the late 1960s, the Society's trustees were permitted to hold to their monthly meetings, where decisions were made that helped propagate interest in the history of Passaic County through exhibits, programs, and publications.



PCHS officials gathered around historic conference table in 1966. Seated from left are James A. Sweeney, Helen L. Malcolm (Treasurer), Dr. D. Stanton Hammond (President Emeritus), Alfred P. Cappio, (President, holding agenda), Robert A. Mills (1st Vice President), retired park executive Frederick W. Loede, (Secretary), Edward M. Graf, (Curator and Librarian) and Mary Schweizer. Standing from left are John D. Quackenbush, (Genealogist), S. Virginia Peterson, (Chief Docent), Leslie L. Post, Dr. Robert J. DeGroat, and Robert P. Brooks. Hammond and Brooks helped incorporate the Society in 1926; Graf had faithfully served the organization since 1931.

The table and chairs made their fortunate return through the efforts of this writer, County Administrator Anthony J. DeNova, and Parks Director Raymond J. Wright, who retired the same month the furniture was delivered. The furniture remains county property for use in a county owned building, but there is the strong likelihood our society will undertake its restoration. The room where it reposes will eventually serve as a venue for county functions, business conferences and related events, thus linking a remarkable past with a productive future.

To the superficial observer, the furniture might appear as purely utilitarian, circa 1917 objects, but those who are historically inclined have a different impression: they represent a slice of history, burnished by age, and worthy of continued use and preservation. After proper clearances were obtained, and the furniture made its reappearance in Lambert's sandstone confection, Mr. Wright commented, "It was simply a matter of doing what was right. That table and chairs had a history in Lambert Castle, and I'm glad to know as I leave, they're back where they should be."

LAMBERT TOWER AT WAR

by Jack Goudsward

Catholina Lambert, the silk magnate who constructed Lambert Castle, decided to add to the grandeur of his estate by building an Observation Tower in 1896. The tower is 500 feet above sea level and constructed of local stone. From inside the tower commanding views over Paterson and into the New York skyline and Bear Mountain can be obtained. Later a telescope was added so areas as far away as New York Harbor could be viewed. With the death of Catholina Lambert the land was sold. The Passaic County Park Commission obtained the land and developed Garret Mountain Park. The dedication ceremonies were held on July 4, 1929 at the base of the tower.

As the dark clouds of war gathered over Europe, preparations for the coming war commenced in Paterson. Attention again turned to the tower.



At the April 26, 1941, meeting of the Passaic County Park Commission, attention was drawn to the selection and designation of the Observation Tower in Garret Mountain Reservation as an Aircraft Observation Post that was requested by the American Legion. They also requested, in accordance with

the National Defense Program, that telephone service be installed at the tower. Commissioner Garret A. Hobart made the motion and Commissioner Geller seconded it. The motion passed. A telephone link was made with Mitchell Field for fighter support. Over the telephone operation instructions were painted:

FLASH MESSAGE FORM - CALL YOUR TELEPHONE CENTRAL - SAY ARMY FLASH - CENTRAL WILL CONNECT YOU TO THE ARMY INFORMATION CENTER - WHEN YOU HEAR THE ARMY SAY "GO AHEAD PLEASE" - YOU SAY "FLASH" - AND CONTINUE MESSAGE - FOLLOW FORM BELOW IN ORDER INDICATED FOR.

Later a sign was placed on the door of the tower that read "U.S ARMY - ARMED SENTRY IS PATROLLING THIS POST - IT IS DANGEROUS TO PASS BEYOND THIS POINT." This post would be known as Post 77A, and was the first defense post established to defend Paterson.

Civilian Defense members from the Aircraft Warning service as well as troops of the 67th Coast Artillery stood watch at the tower. Aircraft were tracked, identified and speed and direction were given. This would help the Anti-Aircraft Batteries to train their guns on the possible enemy and alert the Civilian Defense Authorities so they could take appropriate action to protect the citizens of Paterson.

Frederick W. Leeds, engineer and secretary for the Park Commission, wrote a letter to John J. Orr, Chief Observer, informing him of the actions of some of the observers. He stated that at times they would rush from the tower and question people in the park at length about why they are

there. Some were there to enjoy the park or to see the sights. After a number of terrifying incidents, rules were laid down and this practice stopped. The spotters were informed that the park Commission employs their own police force and they were to refrain from issuing orders to the public. They were instructed to refer all problems to the park Police.

But it did not stop the problems at the tower, Mr. Leeds wrote another letter to Mr. Orr informing him again of the actions of the observers. This time it took the form of uneaten food being dropped out the windows of the post and littering the ground. Again quick action was taken and this practice ended.

In June 1943 Paterson along with Delaware and southern New York were part of an air raid test. This alert covered an area with a population of 13 million. B-24 Liberator bombers were used as enemy aircraft for this test. The first warning in the test was received at 9:16 p.m. when the amber signal, preliminary caution, was received. The blue was relayed at 9:30 p.m., when raiders were expected overhead, followed 20 minutes later by the red signal, the attack warning. The white all clear signal came in at 10:42. As the planes passed over the city, they were tracked by Army search lights and their progress plotted by air spotters.

Excitement broke out at the control center in the city hall Annex when aircraft spotters at the Garret Mountain observation post reported to Chief of Staff Louis J. Schmerber that six flares had been thrown near the Passaic Valley Water Commission Dam above New Street in West Paterson. Water Commission guards were dispatched and the flares were extinguished. They reported that the flares were of the magnesium type. This added to the excitement until West Paterson police reported that the flares were set off as part of a planned event. After the all clear was given, there was a feeling that a repeat test might occur. So Chairman Pittet directed all key personnel to remain at their posts. They were released before 11 o'clock.



In October air spotters were ordered to operate on a reduced basis. The posts were to operate on Wednesday afternoon from 1 to 5 p.m. This order came from the War Department and went on to say, "All units will remain intact, all actives including observation classes, awarding of merit medals and organiza-

tion meeting will continue. All posts will be on alert and chief observers will be notified by telephone in case of an emergency."

Chief Observer John W. Orr received instructions, from Gen. H. H. Arnold of the Army Air Force at his post on Garret Mountain. The General informed him that "We have made a transition to the offense. But posts must be held in readiness. All have done a marvelous job since December 7, 1941 and their work may have kept the enemy away. This new order will permit men to engage in other war work."

John Orr also received a letter from Col. L. C. Craigie, of the Air Corps of the Eastern Area, urging that personnel be trained as formerly and that all precautions be taken to protect equipment on the days the posts were not in operation. He also praised the Paterson post and its 235 members. They logged an average of 3,000 man hours a month, or 66,000 hours since its inception.

Brigadier-General Glenn O. Barcus, commanding the First Fighter Command, sent a telegram stating:

This is to inform you that the War Department has determined that until further notice, 24 hour continuous operation of all Army Air Forces ground observer corps, observation posts be discontinued. Upon receipt of this telegram, reporting should cease immediately. The War Department has further directed that the ground observer corps should be held intact and operated at intervals so that it can be fully re-activated at any

time. It is therefore directed that the observation post now operating be manned each Wednesday from 1 p.m. to 5 p.m. Eastern War Time commencing October: 13, 1943. This wire is being sent to all district directors, CAN, area supervisors and chief observers. Detailed instructions will follow.



GLENN O. BARCUS
Brigadier-General
Commanding the First Fighter
Command

Immediately upon receiving this communiq , Mr. Orr issued a request to all observers that they continue their interest uninterrupted. He said, "The work is not stopped, but reduced".

In May of 1944 the New York Air Defense Wing Ground observation Corps was told of the suspension of operations at Lambert Tower. All Army related equipment was removed and the tower vacated, Today the tower stands idle, one of the few remaining structures remaining that defended Paterson.

Bibliography

Herald News (Woodland Park, New Jersey)
Garret Mountain a Lookout in WWII. April 19, 2004:1.

Minute Book A-2 of the Passaic Valley Park Commission, April 9, 1937 to March 17, 1953.

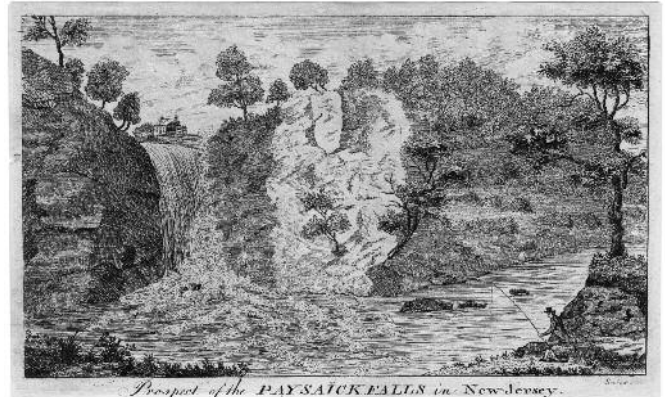
Orr, John, and Frederick W. Leode, Letters between. Passaic County Historical Society, Paterson, New Jersey.

Paterson News (Paterson, New Jersey)
County's Air spotters Cut Duty to 1 to 5 on Wednesdays, October 5, 1943:1.

The Record (Hackensack, New Jersey)
Garret Mountain's Majesty. March 29, 2002:11

A SUMMER PICNIC AT THE TOTOWA FALLS IN 1778

by Robert L. Cohen



**But the stranger still gazes, with wondering eye,
On the rocks rudely torn, and groves mounted on high,
Still lanes on the cliff's dizzy borders to roam,
Where the torrent leaps headlong, embosomed in foam.**

From "The Falls of the Passaic," by Washington Irving

The Lenape called the river Pahsayek meaning valley. It was formed at the end of the last ice age approximately 13,000 years ago. The Passaic River started flowing as drainage from the Glacial Lake Passaic as the Earth warmed and the glacier retreated to the north. It flows almost 80 miles in a semi-circular route; south then north, then northeast then south to Newark Bay and the ocean. Along its course in an area called Totowa, which is part of the Acquackanok Patent, lies a spectacular falls. They are about 77 feet high and 280 feet wide.

Not many people live around this area. There are some Dutch settlers but by now virtually no Lenape. The settlers pretty much farm a diverse crop, including much grain. There are diverse farm animals; pigs, chickens, cattle, and horses for plowing. They store grain, farm equipment and their animals in the winter in their excellent barns. There are a few roads around leading to some other settlements, other farms and market settlements. But the farmers also use makeshift roads and trails and they get around pretty well.

For recreation a nice walk to the scenic falls and its flowing river on both sides leads to swimming, fishing and boating as the Lenape did for many, many years before them.

The Falls are quite beautiful and exude great power in their descent and maybe someday accomplished artists will paint them, but now it is July, 1778 and a war is going on. Fairly close to this area his Excellency General Washington and his troops are encamped.

As a matter of fact, General Washington has business in Paramus and leaves his encampment with General Lafayette and two Aides-de-Camp. They spot the falls and decide to have a picnic lunch close to them. They choose a nice spot close to where the falls spill over a rock ledge to start their descent. As the picnic proceeds, one of Washington's aides, Colonel Alexander Hamilton, notices the power of the falls, and this awesome sight begins the process that will involve Hamilton in the development of one of the first manufacturing centers in the new Republic...

PATERSON.

LIBRARY MISSION IS EXPANDED

Since 1967, when the Passaic County Historical Society was bequeathed the spoon collection of Bertha Schaefer Koempel, Lambert Castle has been a site of interest for spoon collectors.

With more than 5,400 unique spoons finely crafted from silver and other metals, the Society holds what is considered "the largest collection of souvenir and ornamental spoons in the world." Currently the Society is seeking funds to reinstall the collection in its own room.

Recently, Robert M. Wilhelm, director of the American Spoon Collectors in Rhinecliff, New York, recommended that the Society consider gathering books and reference materials on spoons and spoon collecting.

He believes that, when the collection is properly mounted, collectors from around the globe will come to see it, and the Society should have a comparable reference collection for those of scholarly interest.

In November, the Board of Trustees approved the concept. Since then, Wilhelm prepared a bibliography of essential books on the topic, and the Board designated a \$150 donation from the United Jewish Federation of Northern New Jersey Lee and Adele Dresner Donor Fund, to be used to purchase the first books for this collection.

This is a significant expansion of the Library's mission and a positive step in complementing the Society's Spoon Collection.



Pictured is a late 19th century Dresden Porcelan decorative spoon; probably used for high tea with fine china, just one of the many elegant spoons from the collection.

A promotional graphic for an antique show. It features a large tag with text and a circular seal. The tag says "Passaic County Historical Society Presents 5th Annual Antique Show & Sale at Lambert Castle" with admission of \$5.00 and dates May 21-22, 2011. A separate tag for a "Friday Night Preview" on May 20th is also shown. The background includes a photograph of Lambert Castle and the society's seal.

Passaic County Historical Society Presents
5th Annual
Antique Show & Sale at Lambert Castle
Admission **\$5.00**
May 21-22, 2011 • 10am to 5pm
See reverse for more information.

Friday Night Preview
May 20th • 7pm
\$15 per person*
Light refreshments for your enjoyment
**Includes one return visit*

THE PASSAIC COUNTY HISTORICAL SOCIETY
INCORPORATED 1926

World Renowned Spoon Collection Will Get New Setting At Lambert Castle

As a young Patersonian, Bertha Schaefer-Koempel (1882-1966) began collecting souvenir spoons from all over the world. It was to become her lifelong passion. At the time of her death, Mrs. Koempel had amassed over 5,400 spoons from every state in the union and many foreign nations.

The Passaic County Historical Society in 1967 became the beneficiary of this unique and dazzling assembly of what is called the "largest collection of souvenir and ornamental spoons in the world."

Recently, the Society's Board of Trustees embarked on an ambitious project to reinstall this collection in its own room within the museum. With a commanding vista of Paterson and New York skyscrapers, the room is a fitting location for Mrs. Koempel's treasured collection.

All proceeds from the 5th Annual Antique Show will be used for the reinstallation of these magnificent spoons, brilliantly fashioned from silver, shells, bone and wood and other base-metals.

Thank you for supporting this endeavor.

**Prestigious Antique Dealers Offering a Wide Array
of High Quality Merchandise.**

*Fine Jewelry, Silver, Furniture, Antique Glass,
Vintage Clothing and Accessories, Ephemera,
Memorabilia, and more!*

PASSAIC COUNTY HISTORICAL SOCIETY LAMBERT CASTLE

3 Valley Road at the Clifton/Paterson Border

Visit us at: www.lambertcastle.org or call: (973) 247-0085