



HISTORICAL SOCIETY
Genealogy Club
Est. 1985

Winter 2001/Spring 2002

Vol. 12 • No. 2/3

The Castle Genie

NEWSLETTER OF THE GENEALOGY CLUB

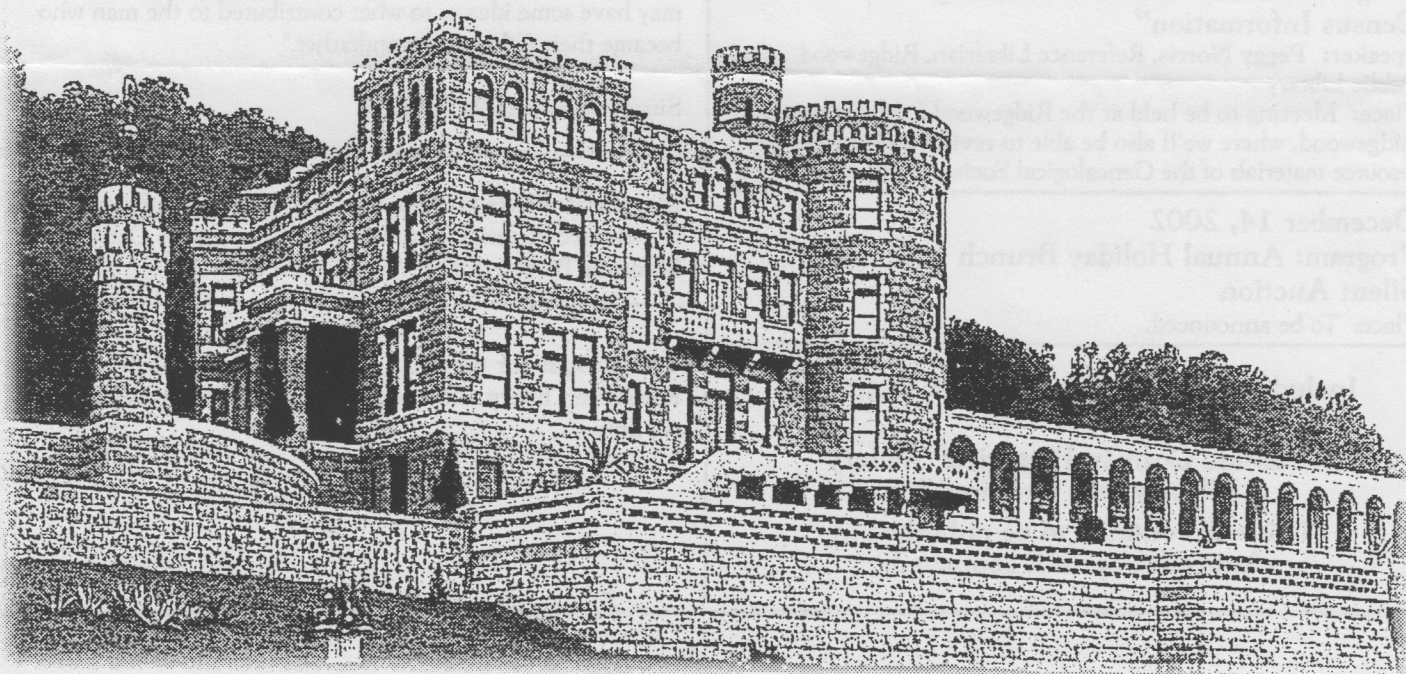
Passaic County Historical Society, Lambert Castle, Valley Road, Paterson, New Jersey 07503

HISTORICAL SOCIETY OPENS LOCAL HISTORY & GENEALOGY LIBRARY AT LAMBERT CASTLE

The long awaited day has finally arrived. On Sunday, April 14th, at 2:00 P.M. the P.C.H.S. Library celebrate its Grand Opening.

Treading cautiously, the library will initially open to the public on Wednesdays and Fridays during the hours of 1:00 to 4:00 P.M., and also on the second and fourth Saturdays of each month from 1:00 to 4:00 P.M.

Photos of the Library appear on page 3



Club News

Meetings begin at 10:00 a.m. on the second Saturday of the month at Lambert Castle.

Calendar

September 14, 2002

Program: "Census Records"

Speaker: William L. Ware

The first of two fall programs about censuses, this program will cover diverse types of census records, many of which are overlooked by the researcher. There will be an in-depth look at federal population schedules, including basic information, geography, indexes, finding aids, forms and other valuable information. Also to be covered are non-population schedules, state, local and other census records, reference tools and regional archives.

Club member Bill Ware has over 20 years of genealogy experience. Executive Director of over four Family History Centers, he currently staffs the LDS (Mormon) Family History Center in North Caldwell. He has taught genealogy courses at the Rutherford and Fair Lawn evening adult schools for several years and has lectured for various genealogical, historical and local organizations on numerous genealogical topics.

An active member of the Passaic County Historical Society for 16 years, Ware has served as a Society Trustee and President of the Genealogy Club. He is a founding member of the North Jersey Jewish Genealogical Society, and was President of the Genealogy Club of the New Jersey Historical Society from 1995 to 2000.

October 12, 2002

Program: "New York Research"

Speaker: Arthur Simpson III, genealogist and Trustee of both the NYG&B and Bergen County Genealogical Society.

This topic will cover where and how to research in New York, with an emphasis on resources in New York City and including some New York history to show implications of county boundary changes and the annexation of counties into New York City.

November 9, 2002

Program: "New Methods of Finding Census Information"

Speaker: Peggy Norris, Reference Librarian, Ridgewood Public Library

Place: Meeting to be held at the Ridgewood Public Library in Ridgewood, where we'll also be able to review and use the resource materials of the Genealogical Society of Bergen County.

December 14, 2002

Program: Annual Holiday Brunch and Silent Auction

Place: To be announced.

Included in this newsletter is the beginning of a guide to the

"Passaic County Historical Society Library and Archives".

This will continue to be published in future issues until completed.

Out of the Mailbag

Mr. Robert W. HILLIER briefly writes us about his childhood recollections of being an "inmate" of the Passaic County Orphan Asylum. The following are excerpts from two letters directed to us:

".....I was a resident of the Paterson Orphan Asylum, located at 500 Market Street from 1922 until 1935. Hence, I was very much intrigued when I discovered – on the Internet – an article by Catherine DECKER and Maryjane PROCTOR. As a result of reading their article, so many memories came flooding back, and I decided that I would try to find as much information regarding the Orphanage as I could to pass on the information to my daughter, son, and grandchildren.

"I was the recipient of the tender loving care of this orphanage from the time I was one year old (1922) until I was 14 (1935). Upon the death of my mother (nee Sadie CUBBY), my dad was left with three boys, ages one, four, and seven. My 4-year-old brother Francis was placed with my Uncle Chris and Aunt Anna while my oldest brother, Roland, and I were placed in the Paterson Orphan Asylum. All the children attended School #15 located two blocks from the Orphanage in the "Sandy Hill" section of Paterson.

"I have often told my children how fortunate I was to have spent my early childhood amongst such caring people who ran the Orphanage.

"The Superintendent, Mr. HOLCOMBE, and his wife were very kind to us all and administered discipline in a firm (but fair and kindly) manner.

"The various Paterson organizations such as The Elks (we thought BPOE meant "Best People On Earth!!), The Masons, The Cardinals, and the Knights of Columbus, all contributed to our well being either by gifts at Christmastime or by taking us the Amusement Parks in the summer. Fire Engine Company #6 also gave of themselves for all the children.

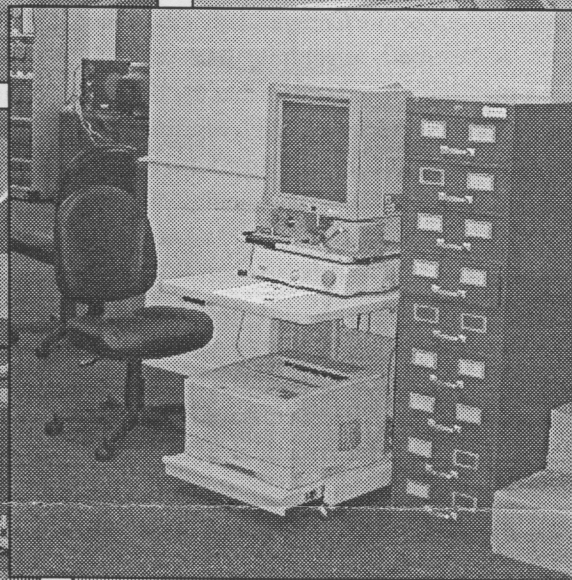
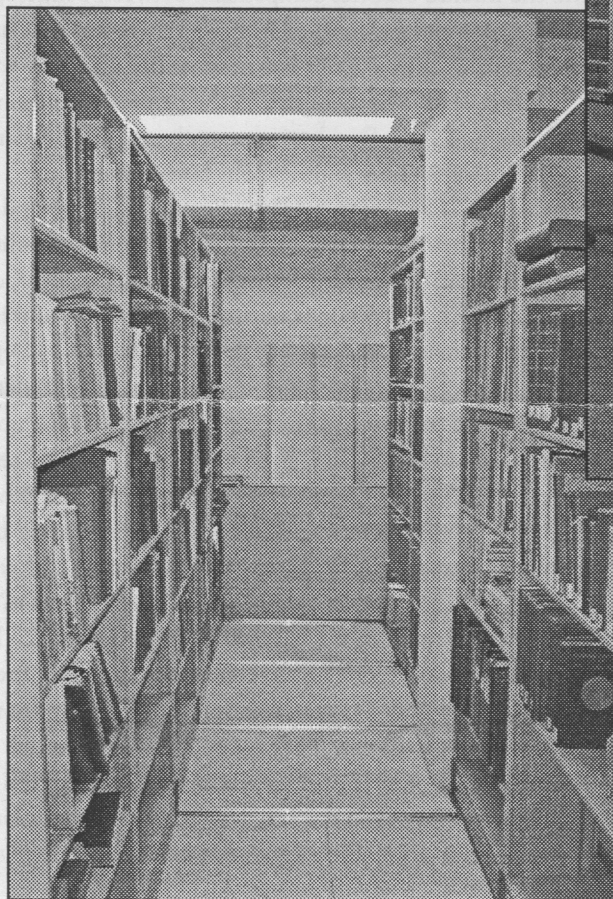
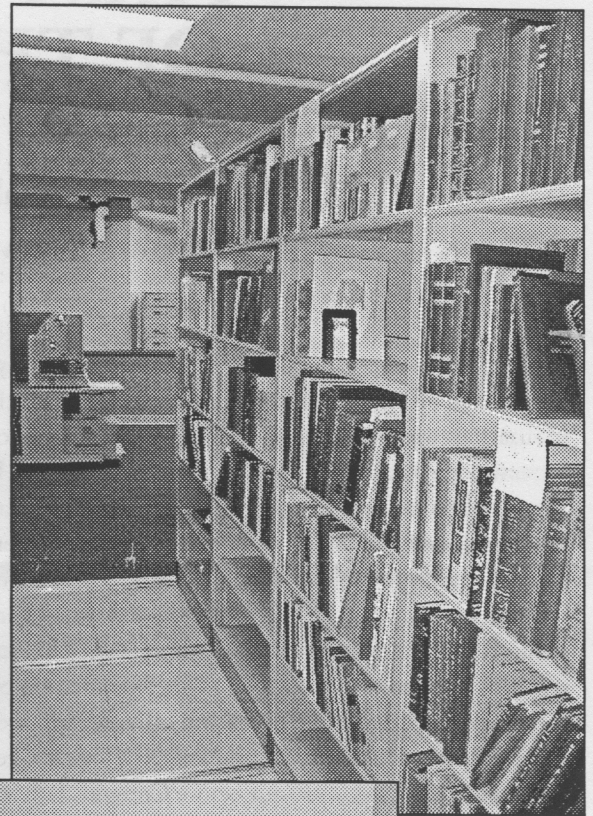
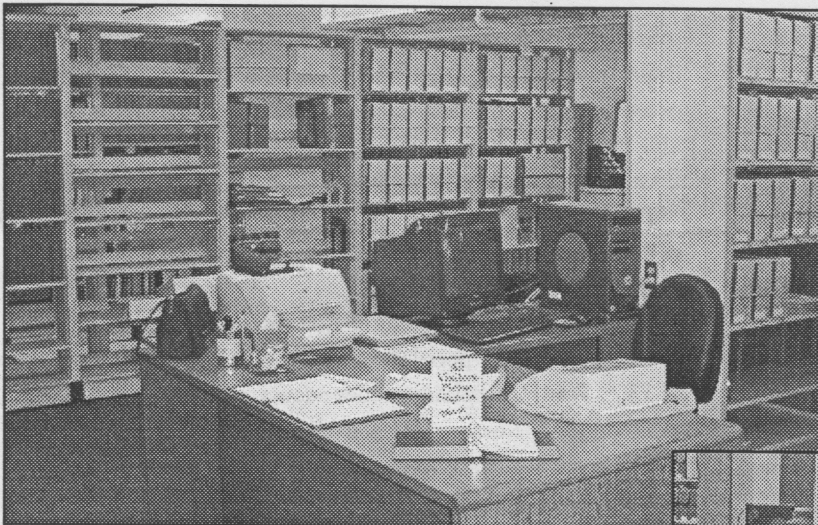
"I would like to obtain (copies of "The History of the Paterson Orphan Asylum 1832-1952) to pass on to my children (son and daughter) and (five) grandchildren so that they may have some idea as to what contributed to the man who became their father and grandfather."

Sincerely, Robert W. HILLIER

My special thanks to George Decker and Annita Zalenski who contributed material for this issue of "The Castle Genie." Maryjane Proctor, Editor, "The Castle Genie."

We apologize for the delay in the publication of this newsletter. Every effort will be made to get future editions on time.

A closer look at the New Passaic County Historical Society Library



“FIRST IN THE PATH OF THE FIREMEN”

THE FATE OF THE 1890 POPULATION CENSUS

Taken from National Archives and Records Administration
<http://www.nara.gov/publications/prologue/1890cen1.html>

By Kellee Blake

Of the decennial population census schedules, perhaps none might have been more critical to studies of immigration, industrialization, westward migration, and characteristics of the general population than the Eleventh Census of the United States, taken in June 1890. United States residents completed millions of detailed questionnaires, yet only a fragment of the general population schedules and an incomplete set of special schedules enumerating Union veterans and widows are available today. Reference sources routinely dismiss the 1890 census records as “destroyed by fire” in 1921. Examination of the records of the Bureau of Census and other federal agencies, however, reveals a far more complex tale. This is a genuine tragedy of records--played out before Congress fully established a National Archives--and eternally anguishing to researchers.

As there was not a permanent Census Bureau until 1902, the Department of the Interior administered the Eleventh Census. Political patronage was “the most common order for appointment” of the nearly 47,000 enumerators; no examination was required. British journalist Robert Porter initially supervised the staff for the Eleventh Census, and statistician Carroll Wright later replaced him. This was the first U.S. census to use Herman Hollerith's electrical tabulation system, a method by which data representing certain population characteristics were punched into cards and tabulated. The censuses of 1790 through 1880 required all or part of schedules to be filed in county clerks' offices. Ironically, this was not required in 1890, and the original (and presumably only) copies of the schedules were forwarded to Washington.

June 1, 1890, was the official census date, and all responses were to reflect the status of the household on that date. The 1890 census law allowed enumerators to distribute schedules in advance and later gather them up (as was done in England), supposedly giving individuals adequate time to accurately provide information. Evidently this method was very little used. As in other censuses, if an individual was absent, the enumerator was authorized to obtain information from the person living nearest the family.

The 1890 census schedules differed from previous ones in several ways. For the first time, enumerators prepared a separate

schedule for each family. The schedule contained expanded inquiries relating to race (white, black, mulatto, quadroon, octoroon, Chinese, Japanese, or Indian), home ownership, ability to speak English, immigration, and naturalization. Enumerators asked married women for the number of children born and the number living at the time of the census to determine fecundity. The 1890 schedules also included a question relating to Civil War service.

Enumerators generally completed their counting by July 1 of 1890, and the U.S. population was returned at nearly 63 million (62,979,766). Complaints about accuracy and undercounting poured into the census office, as did demands for recounts. The 1890 census seemed mired in fraud and political intrigue. New York State officials were accused of bolstering census numbers, and the intense business competition between Minneapolis and St. Paul, Minnesota, resulted in no fewer than nineteen indictments against Minneapolis businessmen for allegedly adding more than 1,100 phony names to the census. Perhaps not surprisingly, the St. Paul businessmen brought the federal court complaint against the Minneapolis businessmen.

In March 1896, before final publication of all general statistics volumes, the original 1890 special schedules for mortality, crime, pauperism and benevolence, special classes (e.g., deaf, dumb, blind, insane), and portions of the transportation and insurance schedules were badly damaged by fire and destroyed by Department of the Interior order. No damage to the general population schedules was reported at that time. In fact, a 1903 census clerk found them to be in “fairly good condition.” Despite repeated ongoing requests by the secretary of commerce and others for an archives building where all census schedules could be safely stored, by January 10, 1921, the schedules could be found piled in an orderly manner on closely placed pine shelves in an unlocked file room in the basement of the Commerce Building.

At about five o'clock on that afternoon, building fireman James Foster noticed smoke coming through openings around pipes that ran from the boiler room into the file room. Foster saw no fire but immediately reported the smoke to the desk watchman, who called the fire department. Minutes later, on the fifth floor, a watchman noticed smoke in the men's bath-

room, took the elevator to the basement, was forced back by the dense smoke, and went to the watchman's desk. By then, the fire department had arrived, the house alarm was pulled (reportedly at 5:30), and a dozen employees still working on upper floors evacuated. A total of three alarms and a general local call were turned in.

After some setbacks from the intense smoke, firemen gained access to the basement. While a crowd of ten thousand watched, they poured twenty streams of water into the building and flooded the cellar through holes cut into the concrete floor. The fire did not go above the basement, seemingly thanks to a fireproofed floor. By 9:45 p.m. the fire was extinguished, but firemen poured water into the burned area past 10:30 p.m. Disaster planning and recovery were almost unknown in 1921. With the blaze extinguished, despite the obvious damage and need for immediate salvage efforts, the chief clerk opened windows to let out the smoke, and except for watchmen on patrol, everyone went home. Newspaper photographs captured the scene after the devastating fire and pointed out the need for safe storage of national records.

The morning after was an archivist's nightmare, with ankle-deep water covering records in many areas. Although the basement vault was considered fireproof and watertight, water seeped through a broken wired-glass panel in the door and under the floor, damaging some earlier and later census schedules on the lower tiers. The 1890 census, however, was stacked outside the vault and was, according to one source, "first in the path of the firemen." That morning, Census Director Sam Rogers reported the extensive damage to the 1890 schedules, estimating 25 percent destroyed, with 50 percent of the remainder damaged by water, smoke, and fire. Salvage of the water-soaked and charred documents might be possible, reported the bureau, but saving even a small part would take a month, and it would take two to three years to copy off and save all the records damaged in the fire. The preliminary assessment of Census Bureau Clerk T. J. Fitzgerald was far more sobering. Fitzgerald told reporters that the priceless 1890 records were "certain to be absolutely ruined. There is no method of restoring the legibility of a water-soaked volume."

Four days later, Sam Rogers complained they had not and would not be permitted any further work on the schedules until the insurance companies completed their examination. Rogers issued a state-by-state report of the number of volumes damaged by water in the basement vault, including volumes from the 1830, 1840, 1880, 1900, and 1910 censuses. The total number of damaged vault volumes numbered 8,919, of which 7,957 were from the 1910 census. Rogers estimated that 10 percent of these vault schedules would have to be "opened and dried, and some of them recopied." Thankfully, the census schedules of 1790-1820 and 1850-1870 were on the fifth floor of the Commerce Building and reportedly not damaged. The new

1920 census was housed in a temporary building at Sixth and B Streets, SW, except for some of the nonpopulation schedules being used on the fourth floor.

Speculation and rumors about the cause of the blaze ran rampant. Some newspapers claimed, and many suspected, it was caused by a cigarette or a lighted match. Employees were keenly questioned about their smoking habits. Others believed the fire started among shavings in the carpenter shop or was the result of spontaneous combustion. At least one woman from Ohio felt certain the fire was part of a conspiracy to defraud her family of their rightful estate by destroying every vestige of evidence proving heirship. Most seemed to agree that the fire could not have been burning long and had made quick and intense headway; shavings and debris in the carpenter shop, wooden shelving, and the paper records would have made for a fierce blaze. After all, a watchman and engineers had been in the basement as late as 4:35 and not detected any smoke. Others, however, believed the fire had been burning for hours, considering its stubbornness. Although, once the firemen were finished, it was difficult to tell if one spot in the files had burned longer than any other, the fire's point of origin was determined to have been in the north-eastern portion of the file room (also known as the storage room) under the stock and mail room. Despite every investigative effort, Chief Census Clerk E. M. Libbey reported, no conclusion as to the cause was reached. He pointed to the strict rules against smoking, intactness of electrical wires, and noted that no rats had been found in the building for two months. He further reasoned that spontaneous combustion in bales of waste paper was unlikely, as they were burned on the outside and not totally consumed. In the end, even experts from the Bureau of Standards brought in to investigate the blaze could not determine the cause.

The disaster spurred renewed cries and support for a National Archives, notably from congressmen, census officials, and long-time archives advocate J. Franklin Jameson. It also gave rise to proposals for better records protection in current storage spaces. Utah's Senator Reed Smoot, convinced a cigarette caused the fire, prepared a bill disallowing smoking in some government buildings. The Washington Post expressed outrage that the Declaration of Independence and Constitution were in danger even at the moment, being stored at the Department of State in wooden cabinets.

Meanwhile, the still soggy, "charred about the edges" original and only copies of the 1890 schedules remained in ruins. At the end of January, the records damaged in the fire were moved for temporary storage. Over the next few months, rumors spread that salvage attempts would not be made and that Census Director Sam Rogers had recommended that Congress authorize destruction of the 1890 census. Prominent historians, attorneys, and genealogical organizations wrote to new Secretary of Commerce Herbert Hoover, the Librarian of Congress, and other government officials in protest. The National Genealogical

Society (NGS) and Daughters of the American Revolution formally petitioned Hoover and Congress, and the editor of the NGS Quarterly warned that a nationwide movement would begin among state societies and the press if Congress seriously considered destruction. The content of replies to the groups was invariably the same; denial of any planned destruction and calls for Congress to provide for an archives building. Herbert Hoover wrote "the actual cost of providing a watchman and extra fire service [to protect records] probably amounts to more, if we take the government as a whole, than it would cost to put up a proper fire-proof archive building."

Still no appropriation for an archives was forthcoming. By May of 1921 the records were still piled in a large warehouse where, complained new census director William Steuart, they could not be consulted and would probably gradually deteriorate. Steuart arranged for their transfer back to the census building, to be bound where possible, but at least put in some order for reference.

The extant record is scanty on storage and possible use of the 1890 schedules between 1922 and 1932 and seemingly silent on what precipitated the following chain of events. In December 1932, in accordance with federal records procedures at the time, the Chief Clerk of the Bureau of Census sent the Librarian of Congress a list of papers no longer necessary for current business and scheduled for destruction. He asked the Librarian to report back to him any documents that should be retained for their historical interest. Item 22 on the list for Bureau of the Census read "Schedules, Population... 1890, Original." The Librarian identified no records as permanent, the list was sent forward, and Congress authorized destruction on February 21, 1933. At least one report states the 1890 census papers were finally destroyed in 1935, and a small scribbled note found in a Census Bureau file states "remaining schedules destroyed by Department of Commerce in 1934 (not approved by the Geographer)." Further study is necessary to determine, if possible, what happened to the fervent and vigilant voices that championed these schedules in 1921. How were these records overlooked by Library of Congress staff? Who in the Census Bureau determined the schedules were useless, why, and when? Ironically, just one day before Congress authorized destruction of the 1890 census papers, President Herbert Hoover laid the cornerstone for the National Archives Building. Even after the outcry in 1921, thirteen years later the Census Bureau destroyed the remaining 1890 schedules.

In 1942 the National Archives accessioned a damaged bundle of surviving Illinois schedules as part of a shipment of records found during a Census Bureau move. At the time, they were believed to be the only surviving fragments. In 1953, however, the Archives accessioned an additional set of fragments. These sets of extant fragments are from Alabama, Georgia, Illinois, Minnesota, New Jersey, New York, North Carolina, Ohio, South Dakota, Texas, and the District of Columbia and have

been microfilmed as National Archives Microfilm Publication M407 (3 rolls). A corresponding index is available as National Archives Microfilm Publication M496 (2 rolls). Both microfilm series can be viewed at the National Archives, the regional archives, and several other repositories. Before disregarding this census, researchers should always verify that the schedules they seek did not survive. There are no fewer than 6,160 names indexed on the surviving 1890 population schedules. These are someone's ancestors.

THE SPECIAL ENUMERATION OF UNION VETERANS AND WIDOWS

Often confused with the 1890 census, and more often overlooked or misjudged as useless, are nearly seventy-five thousand special 1890 schedules enumerating Union veterans and widows of Union veterans. Nearly all of these schedules for the states of Alabama through Kansas and approximately half of those for Kentucky appear to have been destroyed before transfer of the remaining schedules to the National Archives in 1943. Nearly all, but fragments for some of these states were accessioned by the National Archives as bundle 198. Many reference sources state or speculate that the missing schedules were lost in the 1921 fire. The administrative record, however, does not support this conclusion.

The Pension Office requested the special enumeration to help Union veterans locate comrades to testify in pension claims and to determine the number of survivors and widows for pension legislation. Some congressmen also thought it scientifically useful to know the effect of various types of military service upon veterans' longevity. To assist in the enumeration, the Pension Office prepared a list of veterans' names and addresses from their files and from available military records held by the War Department. The superintendent of the census planned to print in volumes the veterans information (name, rank, length of service, and post office address) compiled from the 1890 enumeration and place copies with libraries and veterans organizations so individuals could more easily locate their fellow veterans.

Question 2 on the general population schedules inquired whether the subject had been "a soldier, sailor, or marine during the civil war (United States or Confederate) or widow of such person." Enumerators were instructed to write "Sol" for soldier, "Sail" for sailor, and "Ma" for marine, with "U.S." or "Conf." in parentheses, for example, Sol (U.S.) or Sail (Conf.). The letter "W" was added to these designations if the enumerated was a widow. According to enumeration instructions, if the veteran or widow responded "yes" to Union service, the enumerator produced the veterans schedule, marked the family number from the general population schedule, and proceeded to ask additional service-related questions.

The upper half of each page on the veterans schedules lists

name, rank, company, regiment or vessel, date of enlistment, date of discharge, and length of service. The lower half contains the post office address, any disability incurred in the service, and general remarks. The question on disability was included because many veterans claimed pensions, under an 1862 act, based on service-related disabilities. The "General Remarks" column usually provides the most colorful, anecdotal, and meaningful information on the schedules.

Although the special enumeration was intended only for Union veterans of the Civil War and their widows, enumerators nevertheless often listed veterans and widows of earlier wars as well as Confederate veterans. Veterans of the War of 1812 are sometimes listed, and there are especially numerous entries for Mexican War veterans. Susan Arnold of Pennsylvania was listed, though her husband died in New Orleans coming home from the Seminole War (1828-1833).

John Yost is listed as serving in the French army under Maximilian. Several sources note that Confederates are inadvertently recorded in this enumeration; actual study of the records reveals that there are some Confederates listed for every extant state (excluding the fragments on bundle 198). Schedules consisting nearly entirely of Confederates are not altogether uncommon, especially in extant schedules of Southern states. The Confederate names are sometimes crossed out or marked as errors (presumably by census supervisors), but the information is usually readable.

Listings for widows can also provide telling insights to the veteran's service, her life or remarriage, even their relationship. Eliza Smith of Pennsylvania was simply listed as the "grass widow of a soldier." A Pennsylvania widow living at the Home for the Friendless claimed she knew nothing of her husband's fate but thought him dead. A Wyoming widow remembered no particulars, only that her husband wore a "blue coat." Enumerators were instructed to list the widow's name above the name of the deceased veteran and fill out the record of his service during the war but list her present post office.

Remarried widows were listed in this manner with their new surname. Dependent mothers are also sometimes listed, as in the case of Pate Halberts of Ohio, who knew little English, but enough to tell the enumerator her son died in Andersonville.

Enumerators often noted the battle or circumstances in which a death or disability had been incurred, such as "shot dead at Gettysburg, July 3rd 1864" or "lost right arm at Resaca." They also had the unenviable task of diagnosing the described ailments such as "harte disease," "indestan of stomic," and "thie woound." Men recounted the loss of eyes, ears, and appendages. They told of falling from and being trampled by horses, being crippled on trains "wrecked by rebels," and going insane from the "noise of war." Allan Hobbs of Salt Lake, Utah, claimed partial paralysis of his feet from freezing in Libbey Prison, and George Search of Baltimore claimed his constitution was broken

after six months at Andersonville. The perils of bad wartime medicine are evident as well. Many reported blood poisoning or crippling from an impure vaccination. One widow told the enumerator her husband died by eating too much morphine. Without a doubt, however, the most widespread permanent disabilities reported by the 1890 veterans were diarrhea (spelled in many creative ways) and piles.

The schedules may reveal anecdotal or unique information. They sometimes briefly chronicle an individual's military career, like that of William Martin of North Carolina, who rose from private to general. Josiah Dunbar's widow claimed her husband was one of the first, if not the first, to enlist in his county, and Bernard Todd remembered he had played in Custer's band at the Appomattox surrender. Ohioan James Stabus admitted he had been captured and paroled by the notorious raider John Hunt Morgan. Jackson Mitchell of Pennsylvania said he was born a slave and compelled at first to serve in the Confederate army. Others proudly noted their service in the U.S. Colored Troops, in specialized units, or as spies. Dennis Arnold of Allegany, Maryland, said he "would go again tomorrow." The schedules may even provide clues about enlistment under "secret or varied names." For example, Samuel Polite, Marcus Moultair, and August Gadson of Sheldonship County, South Carolina, all reported they had enlisted in the Union Army under "secret" names, which the enumerator listed according to instructions, with lawful name preceding the alias. In some instances, the pension certificate number is provided. At least two Missourians were listed on the veterans schedule and overlooked in the general population census.

A less noble side of some veterans is revealed, as well. Some individuals falsely claimed to be veterans, hoping to receive government pensions. "Deserter" is entered in the remarks column often enough, although it is often unclear by whom this information was provided. William Robertson of the Oklahoma Territory was found "sick on drink when visited." One North Carolina enumerator disgustingly reported on a case of pension fraud, noting: "Brown and Branvell were both deserters from the Confederate Army. Brown now draws a pension from 'Uncle Sam' under the plea that he has scurvy of the mouth."

At the completion of the 1890 enumeration, the special schedules were returned with a preliminary count of 1,099,668 Union survivors and 163,176 widows. A large number of schedules were found to be incomplete, and many veterans had been overlooked. The Census Bureau sent thousands of letters and published inquiries in hundreds of newspapers hoping to acquire missing data. As appropriate, corrections and additions were made to the schedules. The initial work of examining, verifying, and classifying the information was suspended in June 1891, awaiting congressional appropriation for publication of the veterans' volumes. During that same period, anticipating the publication, the bureau began transcribing information from

the schedules onto a printed card for each surviving veteran or widow, later to be arranged by state and organization. No fewer than 304,607 cards were completed before this work was also halted. These cards do not seem to be extant, nor does there appear to be a final record of their disposition. Some cards may have been placed in individual service files.

The veterans' publication seemed doomed. Adequate funding was not available, many considered other census work more pressing, and searches for information in the manuscript veterans schedules were cumbersome and costly. In 1893 Carroll Wright, then in charge of the census, argued that too much time had already passed to make any veterans' publication accurate; the general schedules provided an approximate number of Union veterans and widows. He recommended these special schedules be transferred to the Pension Office or the War Department, and in 1894 Congress authorized their transfer to the Commissioner of Pensions for use in the Pension Office and transferred them "shortly thereafter." The schedules were arranged and stored in bundles, generally alphabetically by name of state or territory, and numbered sequentially. In 1930 legal custody of the schedules passed from the Pension Office to the newly formed Veterans Administration, where they remained until accessioned by the National Archives in 1943 as part of Record Group 15. Clearly these schedules were maintained apart from the population schedules and used for different purposes in a different location. Moreover, no reporting from the fires of 1896 or 1921 mention these schedules among the damaged series. It seems nearly impossible they were involved in the Commerce Building fire in 1921.

The extant schedules are available for part of Kentucky through Wyoming, Lincoln Post #3 in Washington, D.C., and selected U.S. vessels and navy yards. The schedules are generally arranged by state and county and thereunder generally by town or post office address. The bundle containing schedules for Oklahoma and Indian Territories are arranged by enumeration districts. Although veterans schedules from the states of Alabama through Kentucky (part) are not known to be extant, bundle 198 on roll 118, "Washington, DC, and Miscellaneous," also contains some schedules for California (Alcatraz), Connecticut (Fort Trumbull, Hartford County Hospital, and U.S. Naval Station), Delaware (Delaware State Hospital for the Insane), Florida (Fort Barrancas and St. Francis Barracks), Idaho (Boise Barracks and Fort Sherman), Illinois (Cook County and Henderson County), Indiana (Warrick County and White County), and Kansas (Barton County). All of the accessioned schedules have been microfilmed and are available as National Archives Microfilm Publication M123 (118 rolls).

There is no comprehensive index to the 1890 special enumeration, but indexes to some states or specific areas have been prepared by various publishing companies and private groups. These special enumerations are well worth examination.

Although it may be time-consuming to wade through an unindexed county, the information rewards can be priceless and uncommon. Few series in the National Archives rival this one for anecdotal information and local color.

The Washington Herald and other newspapers reported the events of January 10, 1921, and decried the loss of valuable records.

Of course, there is no real substitute for the lost 1890 or any other comprehensive federal census. Records relating to elections, tax or criminal legislation, impending statehood, war, economic crisis, vital statistics reporting, and other local events may provide alternative information sources. There are some state and territorial censuses available for the years near 1890. For example, the federal government assisted the states and territories of Colorado, Florida, Nebraska, New Mexico, and the Dakotas in an 1885 census. There is an 1890 territorial census for some areas in Oklahoma. The 1890 poll lists or "Great Registers" for selected counties in Arizona and California are extant and available at the respective state archives. The Arkansas Genealogical Society has sponsored a statewide program to reconstruct the missing 1890 federal census using tax and other local records. Ann Lainhart's *State Census Records* (Genealogical Publishing Co., Inc., 1992) includes state-by-state listings of census resources, including some census and other alternatives for the 1890 federal census. Researchers are encouraged to contact state and local repositories to inquire about alternative resources and verify records arrangement, availability, and content.

The loss of the 1890 schedules and absence of part of the special veterans enumeration are especially painful information losses for which there is no real balm. However, all of the federal censuses (pre-1920) might have been destroyed in that 1921 fire, especially if it had consumed the entire Commerce Building. It is a wonder now, as it was to the secretary of commerce at the time of the fire, that such a large number of records were saved. Most researchers in federal records are frustrated at some point by gaps in records, lack of indexes and description, poor quality images, or unknown records provenance. More than 150 years passed between the signing of the Declaration of Independence and the establishment of a U.S. National Archives, however, and the nation paid a high price for this delay. Critical records succumbed to war, fire, flood, theft, moves, agency reorganization, administrative error, improper filming, ignorance, apathy, and the ravages of time. It is really quite remarkable that so many valuable records are extant and available for research. The tragedy of the 1890 census remains a constant reminder of the necessity for a vigorous National Archives and unrelenting vigilance about the historical record.

“ON DONATIONS TO LIBRARIES AND ARCHIVES”

George G. Morgan

We have come to depend on libraries and archives as the major repositories of genealogical reference books, periodicals, serials, and manuscripts. The materials found there can be of tremendous value to our research, and well-trained library personnel who are knowledgeable in the contents of their collections are priceless treasures.

Among the materials found in many special genealogical collection are things that have been donated by patrons or their families. I use the term ‘things’ because it encompasses a wide group of materials that libraries receive – some that are most welcome and some not quite so welcome. In fact, there are a lot of donations that are an extreme burden to a library. I’d like to discuss the concept of what materials can and should be donated to libraries and some examples of things that should not be donated. I’d also like to address the issue of cataloging in the library and what you can and cannot reasonably expect.

MAKING ARRANGEMENTS FOR DONATING MATERIALS

You have invested endless hours and countless trips to libraries, archives, courthouses, government offices, cemeteries, and other venues to obtain information about your ancestors. You may have purchased genealogical software and produced a database of all the information you’ve acquired. In the process, you dutifully input source citations using acceptable bibliographic citation standards and made note of the repository where the materials are stored. You probably have binders, file cabinets, boxes and/or folders containing the originals, or copies of many of these materials so that you can refer to them again as needed. Perhaps you also have boxes or albums of family photographs, and hopefully these are labeled. What is going to happen to all this research after you’re gone? I always encourage family historians to look within their own families for potential heirs to the research collection. Look for family members who may share your passion for the family genealogy and who appear to be candidates to carry on the research tradition and the continuation of the recording of family events. Certainly you want someone to preserve the materials you’ve amassed, and not stow them in a damp and moldy basement or, worse yet, throw them out. Yes, it freezes the blood to think about that prospect! The time to locate an heir to the collection is now. Don’t surprise your favorite nephew or niece with this ‘special bequest’ in your will unless you know for certain that he or she will welcome it.

And what will happen if you cannot locate such an heir? Will you make other arrangements, perhaps donate the materials to a genealogical society, a library, or an archive? Will they accept your materials in total or will they only be interested in a portion of the collection? Will they require funding to house, maintain, and catalog your materials? These are all questions you need to ask yourself – and others – before you make a bequest in a will or make a donation while you are still living!

Another question is whether there are materials or information you have that could benefit others if they were placed in a library’s

reference collection today? For example, would copies of your pedigree charts and family group sheets be helpful to someone researching in the local library where those ancestors lived?

Certainly, family group sheets about my Maryland, North Carolina, and Georgia ancestors would probably be of little interest or use to anyone if I placed them in the Tampa-Hillsborough Public Library, especially if none of these people or their descendants ever lived there. You have to consider where the materials will be of the most interest, where they will be most used, who will use them, and whether it is practical to donate some or all of the materials. A copy of the original land grant for Caswell County, NC, for instance, would be of especial interest to persons in that area or perhaps to the North Carolina State Archives. Copies of my family group sheets regarding the NC patriot, John McKnitt ALEXANDER, would be of interest in the libraries in Mecklenburg County, NC, where he lived, and in Cecil County, MD, from whence he migrated to NC. They might also be of interest to the Olde Mecklenburg [County] Genealogical Society.

The point is, you must give careful thought to what materials you have and where they might do the most good.

THINGS THAT LIBRARIES PROBABLY DON'T WANT

As president of my seminar company, I work with library consortia and cooperatives across Florida. I teach literally thousands of library personnel each year. I visit many libraries as a result of this work and, whenever I travel across the country, I always try to visit libraries and check out their unique collections. As a result, I talk with hundreds of librarians each year and hear the stories of the origins of some of their donated materials. Almost every library has a story that begins with, “You won’t believe this one, but... “ Oh yes, I would! Here are some examples.

An elderly genealogist died, and in her will she bequeathed her entire genealogical collection to the small local public library. When the executor and her son showed up with the U-Haul truck, the library was astounded to receive over 300 books about German genealogy, most written in German. Then came more than twenty cartons of photocopies, letters, and other documents, all unorganized except for a printed surname on the outside of each of the boxes. A separate carton of family photographs, most unlabeled, completed the collection. The family had no use for these materials and the executor said, “Well, she left all this stuff to you. I’m sure you have space for this and can organize it. After all, you are librarians.”

The library now had a mess in its back room and had to figure out how to deal with it. The library director had an employee use a word processor program to type up a list of the book titles in a text file format. Since she had no space or use for all the German books, and belongs to a mailing list of librarians serving genealogists, she sent a message to the other subscribers on the mailing list asking if anyone had interest in these books. If so, they were to e-mail her

and she would send the text file to them. The books were free to any other library that wanted them for only the price of shipping. It took several months, but most of the books found homes in other libraries. As for the cardboard boxes, the county genealogical society and the library are working through the boxes, mostly discarding materials that meant something only to the genealogist who donated her collection. What a pity there was no family member interested in the materials!

Another genealogist who had retired with his wife to Florida, decided that the local library would like to have his collection of Victorian funeral brooches he had collected, as well as all their binders containing the family genealogy from another part of the country. While the brooch collection had some financial value, the library had no desire to own and maintain the collection. They therefore sold it and used the money to develop the library's collection. As for the genealogical binders, the library contacted a genealogical society in the genealogist's old home state, and the collection has now been placed in their society's collection. This is a happy ending for the collection, but it took a great deal of the library's time to liquidate the materials.

Still another family historian donated her many scrapbooks and photograph albums. The scrapbooks were all of a personal nature and related to family events, news items, sports teams, and various other topics. The photograph albums contained family pictures, most of which were carefully labeled and preserved. The library found no genealogical or historical value in the materials and didn't want to house them. It expended a great deal of effort until a relative was located who reluctantly accepted the materials. Some such donations do not have such a happy ending.

The point is that you should never assume that a library has unlimited space and a wild desire to accept whatever you want to donate. Don't assume that they want books about other states and countries or unorganized/unfiled papers about families with no connection to the area. These materials are a burden to the library and must somehow be liquidated or placed with libraries elsewhere.

DONATIONS THAT LIBRARIES MAY BE WILLING TO ACCEPT

If you want to make information and materials available today, they may be of benefit to other researchers. They may also bring your research some exposure to other library researchers that may cause them to contact you. Consider the idea of placing copies of your pedigree charts and family group sheets in a library where others are likely to locate them. When on vacation last summer, I stopped into the Laurens Public Library in Laurens, SC. I found an excellent genealogical collection in a separate room and a helpful librarian who knew her collection in detail. She guided me to the vertical files--file cabinets with file folders grouped by surname or individual. Here I located a number of files containing pedigree charts and family group sheets prepared by other researchers from as far away as Alabama, California, and Canada. Each one was dated and contained the name and address of the contributor. I made copies of these and, on returning home, wrote letters to each person. I received some responses and began correspondence with two researchers that have resulted in extending my research and theirs. The summer before, I obtained one set of pedigree charts at the Rome, GA library which resulted in connections to a whole new family line I have been able to trace back eleven generations.

Libraries are certainly interested in copies of books pertaining to the local area and local families. Unfortunately, library funding is always limited, and the addition of donated books to build the local history collection are usually welcomed. In some cases, libraries are interested in accepting donated periodicals to which they do not subscribe. Perhaps you subscribe to "Ancestry" Magazine, Everton's Genealogical Helper, Heritage Quest, or to the state genealogical/historical society journal. If you plan to discard them after you've read them, why not ask the library if they are interested? You can donate these and use them whenever you like, knowing you have conserved space at home and have potentially helped other researchers.

Libraries may be interested in letters, journals, and diaries that relate to local people, events, and history. It is always best to ask first to see if there is any interest in the materials and space to house them. It is important to ask in advance whether the library is interested in what you have to offer. If not, they can try to help you locate other places that are more appropriate to accept your materials or make suggestions.

WHAT YOU CAN REASONABLY EXPECT

Libraries have limited space for storage, limited numbers of people to catalog and maintain collections, and limited budgets to fund development of collections and insurance of materials in the library. Many libraries do not have genealogical collections. Rather, such collections may be housed in a central facility with a "special collections" area and a budget with which to administer it. The library incurs a cost for every piece of material donated. This includes the cost of shelving units or filing cabinets, the cost of labeling books or creating labeled file folders, the cost of creating a record for every item in the library's online card catalog, and the cost of insurance for the collection.

Because a library must carefully budget and account for how it spends its funds, unexpected donations can add a physical and financial burden to a library's already tight budget. The initial cost of organizing, cataloging, and filing a hundred file folders may cost your library several hundred dollars. Therefore, it sometimes isn't feasible for the library to catalog many of the materials it receives. These items may be filed in the vertical files. Even in larger libraries, the ones with special collections that include genealogical materials, personnel constraints may preclude the cataloging of the sheer volume of donated pedigree charts, family group sheets, letters, and other documents. That means that when you go to the online card catalog, you may not find any listing for a surname or individual. There may, however, be a vertical file folder sitting in a drawer chock full of information you could use. Always ask about any uncataloged materials in vertical files, boxes, or in the back room. The librarians can't read your mind, so be sure and ask.

MAKING THE DECISION

As you consider what genealogical materials you want to donate, consider whether the library you have in mind can accommodate your donate and what they might be able to do with it. Make contact with the library director and/or the head of the genealogical special collection, and ask whether what you want to donate is welcome. This is a form of "planned giving," of course, and requires some planning so as to create a benefit and not a burden. Ask for clarification and assistance in placing your materials. The library can share the benefit of its experience with you.

ELLIS ISLAND CHALK MARKS

Immigrants that passed through Ellis Island underwent a physical examination. Many did not realize that their exam began as they started to climb the staircase which led from the baggage area up to the Great Hall. Doctors stood at the top of the stairs searching for anyone having difficulty carrying their bags, limping, breathing too hard, or even sweating too much. If the doctor found evidence of disease or a disabling condition, their clothing was marked with a symbol. Each symbol had a special meaning.

X	Suspected Mental Defect
Circled X	Definite signs of Mental Defect
B	Black
C	Conjunctivitis
CT	Trachoma
E	Eyes
F	Face
FT	Feet
G	Goiter
H	Heart
K	Hernia
N	Neck
L	Lameness
P	Physical and Lungs
PG	Pregnancy
SC	Scalp (Fungus)
S	Senility
SI	Special Inquiry

It's been said that some very savvy immigrants wore reversible clothing as "insurance." If they received a chalk mark, when opportunity presented itself, they turned their coats inside out and continued on without undergoing the more through exam. "Marked" immigrants were escorted by guards to other exami-

nation areas. There they were checked by another doctor for the ailment indicated by the chalkmark. If the second physician deemed it necessary, the person was sent to the hospital, hopefully to recover. If the ailment or disability was incurable, the immigrant was sent back to his/her port of origin.

If the marked immigrant pass the physical exam, they returned to the Great Hall for further processing. Meanwhile, unmarked immigrants continued through the lines and underwent questionable mental and medical exams, including the dreaded "buttonhook exam." It's been said that a doctor used an ordinary button hook (the kind used to button the high top laced shoes of the era) and placed it over the eyelid. He then pulled the eyelid back to search for trachoma, a highly contagious illness that at that time resulted in blindness.

In the Great Hall, uniformed officials sat behind high desks and questioned the immigrants. Translators shouted their questions over a babble of voices. A wrong or suspicious answer by the immigrant would result in his removal from the line by a guard. The guard would mark "SI" for "Special Inquiry" on the immigrant's shoulder or lapel. Later, all those marked "SI" would meet with a board of interrogators in an inquiry room. Three of the most difficult questions for immigrants were:

(1) For single women "Who sent for you?" If she answered "my fiancée," she usually stayed at Ellis Island until the man arrived. Sometimes officials required that the marriage ceremony be performed on Ellis Island.

(2) "Do you have a job waiting?"

(3) "Who paid your passage?"

These last two questions were especially difficult for poor immigrants because many had signed labor contracts in the old country agreeing to work to exploitative wages in return for a ticket. The problem was that this practice was illegal in the United States.

FAMILY HISTORY FAIR

at City University of New York

Sunday, October 6, 2002 • 12 Noon to 5 P.M.

The Graduate Center, City University of New York, 365 Fifth Avenue at 34th Street, Manhattan

Free Admission

Learn how to: Research your family history • Care for photos and papers • Use libraries and archives
Locate missing relatives • Interpret and translate documents

Exhibits and vendors: Computer software • Ethnic and regional societies • Libraries and repositories
Books, maps and genealogy forms • Civil War research • Archival conservation supplies
Document conservation • Government archives

Workshops: Computers and genealogy • Researching family roots • Military records

Ancestor's Roadshow: Hosted and coordinated by the Association of Professional Genealogists.

Free, one-on-one sessions with professional genealogists will be offered to attendees who bring a specific genealogical problem on which they need assistance.

For additional information and directions go to: <http://www.nycarchivists.org>

FOLK FINDER

Bernice L. Forrest

The Folk Finder Column is devoted to helping genealogical researchers locate Northern New Jersey ancestors/descendants.

We invite researchers to submit requests for help, inquiries about family names, or queries concerning the exchange of information. Requests and inquiries may be e-mailed to me at <bernice.forrest@att.net> or faxed to me at 201-337-1679. Queries by mail should be sent to Passaic County Historical Society, Lambert Castle, Valley Road, Paterson, NJ 07503 Attn: Bernice Forrest - "Folk Finder." If you can help any of our submitters, please contact them directly.

1. **DONAHUE**: Searching for help on locating information on Mary DONAHUE. She was sent to America as a young girl of 13 from Ireland. She was supposed to have been met at the port (port unknown) by relatives, but none showed. She may have gone to an orphanage or taken in by a family right at the dock. There seems to be some connection to the WHEELER family from Passaic County. She arrived in the US in 1880 according to the 1900 Census. Would like information on the time before that - perhaps the 1880 or State Censuses for the 1890s period. Submitted by: Kevin WHETHAM. Email: Kmw1056@aol.com.
2. **HALUPKA**: Joseph HALUPKA was a photographer in Passaic and the surrounding area in the early 1900s until the 1950s. Does anyone have any family photos with his studio listed at the bottom? Some of his work is in the Garfield Police Department. Submitter's Email address: Tidalmon@gateway.net
3. **HILL**: Trying to trace family in Paterson, NJ. Fred Archer HILL was born in England in 1881. (He was named after a British jockey who won a big horserace that day - Fred ARCHER). He traveled to the US, around 1900-1902, with his elder brother, William C. HILL. The two brothers hailed from the Staffordshire area of England but probably arrived here from the Lancashire area. It is believed that both brothers settled in the Paterson area and worked at the New Jersey Steam Pipe Corporation. Fred was employed as a stationary fireman. William married Elizabeth (Lizzie), who is believed to be of English heritage, and had at least one son called Jimmy. It is not known if Fred married during his tenure in Paterson, but he did return to the UK in 1916, leaving his brother, who stayed in the US. He joined the British Army and fought in World War I. In 1920, Fred was married in Bolton, England. His son, Fred, in England, is anxious to find out if he has any living relatives in the Paterson area. He knows that relatives were still alive after World War II because they came to England for a visit with the family. Submitted by: Fred HILL, No. 46, Timberbottom, Bradshaw, Bolton, Greater Manchester, BL2 3DL. Email: Fredhill@46timberbottom.freeseve.co.uk.
4. **HOFFMANN**: Searching for information on Gertrude HOFFMANN who was supposedly born in Paterson 24th of April 1892 and who died there on 19th January 1928. Her maiden name was Gertrude VAN BRUSSELL, daughter of Marinus VAN BRUSSELL and Rosa (Bessie) COOPER. Gertrude was married to James PILKINGTON, 22 June 1910, in Paterson. James died 25th of April 1915, and Gertrude then married John HOFFMANN. This may have been a third marriage. It is believed that the occupation of John HOFFMANN was a chauffeur. Submitter's mother, Mary PILKINGTON CONKLIN, who is now 87 years old can recall living at Lambert's Castle as a small girl. She believes she lived in an apartment over the gatehouse. Help finding a death certificate and any information regarding John HOFFMANN and Gertrude PILKINGTON HOFFMANN would be greatly appreciated. Submitted by: George E. CONKLIN, 747 Southwood Drive, Murray, UT. Phone number: 801-266-7292. Email: geoconk@cs.com.
5. **IRWIN**: Looking for Archie IRWIN b.11 Jan 1894 in Paterson. He was a machinist and the son of Archie IRWIN b. April 1849 and Annie VAN RIFIRE (spelling uncertain) b Sept 1860. Archie IRWIN Sr. was the son of Hugh b 1824 in Ireland and Esther (Unknown) b Ireland and died 18 Dec 1860. Archie Sr. was also the stepson of Jane BELL. Siblings of Archie Jr. are Sarah b 1881, James b 1887, Margaret b 1890, and Charles b 1901. No records have been found for Archie since the 1915 Census and WW I draft registration. Submitter is interested in marriages, offspring, and burial information. Submitted by: Barbara BALFOUR, 1378 Welling Rd, Bellingham, WA 98226-8846. Email: babal4@earthlink.net.
6. **KAYWOOD/CAYWOOD**: Seeking grandmother's sister Mary (Mamie) KILES/KYLES, who was married to Larry ABBOTT O'BRIEN, of Paterson, NJ. They had two children but later separated, and Mary lived with Harry KAYWOOD. She and Harry had a daughter Beatrice KAYWOOD, and possibly a daughter named Katherine, who married a DE LORENZO. Mary was from Southfields, Orange Co., New York. Mary died Oct. 24, 1977 at the Greater Paterson General Hospital and may be buried at the Monroe Cemetery but no record of that can be found. She had a nephew, Sam WRIGHT, from Tuxedo, who was with them during World War II because pictures have been found indicating that they were taken at the Caywood House in Paterson. Harry KAYWOOD died at Valley View Hospital, North Haledon (?) sometime during the 1940's. Submitter is new at Genealogy and is hoping someone will be able to help. Submitted by: Christine SZERMER, 17 West Park Place, Suffern, NY. 10901. Phone number: 845-368-3129.
7. **KENNEDY**: Searching for death location of Eva KENNEDY born about 1873 and died in 1959. She may have died in either Paterson or Little Falls but is buried in Pennsylvania. Her first husband was Ross David BROSIUS who died in 1924. Her second husband was Charles Noble WADE. She had three daughters, Lucinda TAPPER, Oral DINGER, and Faye BABER. Submitted by: Deb. Email: Zkeeper007@aol.com.
8. **KRISMYER**: Seeking obituary of Carrie RUEMBLY KRISMYER (also KRISMEYER, KREISELMAIER) who died in North Haledon in October 1975, specific date unknown. Was she the widow of Edward KRISMYER? Also seeking information on Ellen KRISMYER and her second husband, John BARRET, who resided at 124 Straight St. Paterson from circa 1895-1920 and more. When did they die? Where are they buried? Did Ellen attend Prospect St. M.E. Church? Submitted by: Lois KRISMEYER PARKER, 3644 W. 42nd Avenue, Kennewick, WA 99337. Email: caningbylois@worldnet.att.net.

9. **LYONS**! "Where can I get information on the Catholic orphanage in Paterson and its occupants/residents in the early 1900's?" Alice LYONS (who later married WALTON) and her two sisters were put there by their father, Thomas LYONS, in 1911-1912 when he took them away from their mother, Sophia. In 1914, at the request of Dean McNulty, then Bishop of Paterson and President of the St. Joseph's Female Orphan Asylum, he brought his daughters home to live with him and his new wife. Also researching:

LYONS, CHRISTIE (County Cork, Ireland, Jersey City and Paterson, New Jersey)

WALTON (Leek, Staffordshire, England and Paterson, New Jersey)

LANGMAN/LANGEMANN (Germany, Paterson NJ and California)

SIKKELEE (Texel, Holland and Paterson, New Jersey)

CAMPBELL,BELCHER (Larne, Ireland and Paterson, NJ)

MEHAFFERY (Northern Ireland and Paterson, NJ).

Submitted by: Elizabeth Walton PRUZINSKY, 106 Cedar Road, Pine Knoll Shores, NC 28512. Email: pruzinsky@mail.clis.com.

10. **MIGLIORE**: Looking for help locating Francesca MIGLIORE (marriage name unknown) who was an orphan from Polizzi Generosa and Castellana Sicily. She was the sister of Lucia MIGLIORE RUBE. Lucia and husband Antonio RUBE moved from Bayonne to Paterson around 1907-1908. Lucia and Francesca had "a falling out" and she left. Recent information from a family member indicated that Francesca married and raised five children in Paterson. Other family members moved to the Ridgewood area around 1910. Is there someone out there whose Grandmother or Great Grandmother was names Francesca MIGLIORE??

Submitted by: Nancy RUBE, 71 Cohasset Drive, Rochester, New York, 14618. Email: Mrsrubi@aol.com.

11. **RYAN**: Need help with information on William Francis RYAN. He was born August 8, 1869 somewhere in Ireland to Michael RYAN and Mary WALSH. The Census records indicate his arrival in this country as 1874. He is buried in the M.E. Cemetery in Midvale, NJ. The funeral home that handled the arrangements is Richard Funeral Home on Newark Pompton Tpke in Riverdale. William married submitter's grandmother Dec. 5, 1890 at Grace Methodist Episcopal Church Parsonage, 141 Water Street in Paterson. The parents of William's wife were Joseph or Josiah STEPHENS and Mary JOHNSON. Josiah is listed in the 1850 State Census for Pompton Township. Submitter found an entry in the 1915 NJ State Census for a Mary RYAN at an institution called the Little Sisters of the Poor. Any help with this family would be greatly appreciated. Submitted by: Diane KELLER. Email: Photobk1@aol.com.

12. **SHACKFORD**: Wondering what brought William W. SHATFORD to Paterson from either NH or ME? He had at least 3 children; Robert b April 19 1864, Roderick b April 19 1864, and Esther b Nov. 10 1866. His wife's name may have been PARMLEY. He may have had a fourth child with a second wife, Isabella WILSON DONALDSON who had a son named William Wallace SHACKFORD b Aug 23 1897. This William moved to Ware, Georgia. My only reference to this family is the LDS IGI Web pages so far. There could be a connection with another William W. SHATFORD who was born about 1826. He had a wife named Pamela (?) and children Ann, Norman, Frank, Estilla, William, Robert and Esther. Hoping one of your members may have some information. Submitted by: Joanne SHACKFORD PARKES, 51 MDSS/CC, PSC 3, Box 5066, APO AP 96266 (South Korea). Email: kparkes@iname.com.

13. **SMITH**: Seeking help on finding the family of Edward VAN HOUTEN SMITH 1857-1931 of Paterson. He was married to Mary Elizabeth SNYDER daughter of William J. SNYDER and Elizabeth DIERMAN WINTER. Their children were Eliza Jane, aka Jennie (b Aug 3 1877 and married Walter HEMINGWAY), Carrie M. (b May 11 1897 and married Walter B. BELL), Albert Garrett (1885- 1895), William John (b 1887, married 1) Mary COLLINS and 2) Ella MOORE), Daisy (b 1893?, married 1) John BREEN and 2) CEA), Margaret/Maggie Ann (b 8 June 1883 and married James Frank KIMBLE). Edward VAN HOUTEN SMITH was also married to Abbie FARVER, Elizabeth BRYSON and Jennie ROBERTS. His son William John SMITH and his wife Mary COLLINS had a child, Margaret SMITH born Sept. 1907, but the family has no idea what became of either Mary or daughter Margaret. Submitter will be happy to share any of her findings with interested parties. Submitted by: Marla KASTE, Concord, CA. Email: KeKaste@aol.com.

14. **TOBIN**: Looking for any information regarding TOBIN family of Paterson. Patrick TOBIN b 1865 England, d 1892 Paterson NJ. He married Selina JONES who was born 1865 in Wales and died about 1902. Their children were John b abt 1888 in England and died 1920's in Georgia Prison, Joseph James/Patrick Joseph who was born 1890 in Paterson and Mamie/Mary born 1892. Patrick married Elsie Lydia CHAPMAN in 1912. Elsie was born 1890 and died 1949. Selina JONES TOBIN married Patrick GARDNER after her husband Patrick TOBIN died. They had a child Patrick GARDNER, who due to his mother's death in 1902 lived in a convent and was raised for a few years with the nuns. Eventually, his half-sister Mamie took care of him. Submitted by: Lorraine KARABAICH. Email: lkarabaich@hotmail.com.

15. **TORTOISESHELL (TORTOISHELL)**: Trying to trace descendants of three brothers from Oldham, Lancashire, England. The first brother Alfred TORTOISESHELL (b 1863) emigrated to the US around 1900/1902. His wife Hannah (b 1862) and children, Wilfred (b1885) and Ethel (b 1892) followed. They settled in Paterson, NJ. The second brother Ernest (b 1869), wife Mary (b 1865) and son Harold (b 1892) were in Paterson in 1900 and in 1902 when their daughter Olvie was born. It is suspected that they were involved in the Silk Mill work in early years and later may have owned the Kent Lighting Store. The third brother, Fred (b 1873) is known to have lived with Ernest for around 20 years in Paterson. It is thought that a daughter of one of the brothers was married to or living with a Native American. Another daughter was a leading figure in the Girl Guides or other such organization. There are also two girls; Jean (b 1891) and Julia (b 1892) but it is not known how they fit into the family. Submitted by: Roy and Eileen TORTOISESHELL, 92B Ward Road, R.D. 2, Rotorua, New Zealand. Email: r.tortoiseshell@xtra.co.nz.