



# The Castle Genie

Spring 2012  
Vol. 20 • No. 1

NEWSLETTER OF THE GENEALOGY CLUB  
Passaic County Historical Society, Lambert Castle, Paterson, New Jersey

## Descendants of John Magee

By William M. Glen CG(C)

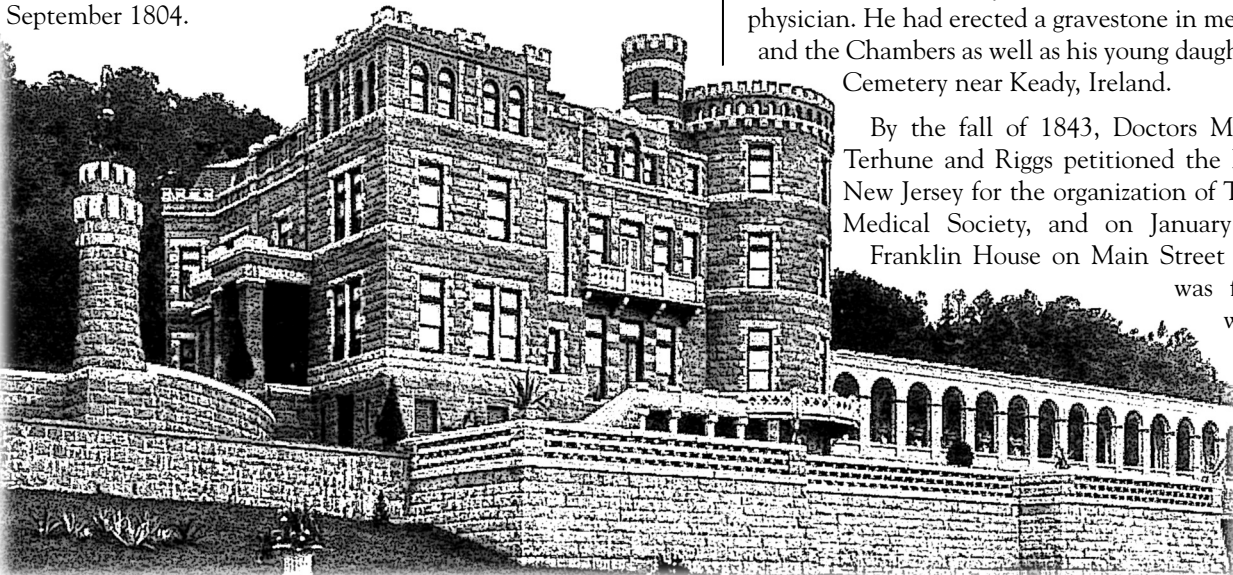
1. **John MAGEE.** Dr. John Magee was noted in the Venago County, Pennsylvania History as having practiced medicine in the Belfast area of Ireland. It also stated that he lived in the same location. Nothing found yet in the Northern Ireland records support that he was a medical doctor. He married **Jane/Jean CAMPBELL**, daughter of Jean CHAMBERS. He was noted signing a lease for the lands Dunlarge, Keady, County Armagh, Ireland, 23 Oct 1832. The lands had previously been in the possession of John and Robert Chambers by lease dated 6th September 1804. He died before 1845.

2. **Dr. William MAGEE** was born on 28 Apr 1792 in Ireland. A William McGee was noted as having been at Edinburgh University in the Medical Program in the years 1811 and in 1815. He did not receive a degree from the University. This contradicts the information in the Venango County History. He married Mary Ann BREADIN, daughter of Tully BREADIN, on 17 Jul 1816 in Ireland. He was noted on 23 Mar 1823 in Dunlarge, Keady, County Armagh, Ireland.

William was selling the lease for 17 acres to William Kidd of Dundrum for the sum of £235. The land had been leased by William Chambers of Dunlarge on the 2nd of October 1760 and subsequently by John and Robert Chambers on the 6th of September 1804.

William Magee had leased the land on the 16th of November 1819. Was this William selling up prior to his move to America? By the 18th of October 1827 William is no longer at Dunlarge. He arrived in New York, New York, U.S.A., on 8 Dec 1827. The passenger list for the vessel Josephine listed William, aged 34, as a physician. He was the only McGee on the vessel so was travelling alone. His family must have followed later. He wrote a letter to his niece Anne Magee of Keady, Armagh, Ireland on 10 Aug 1838. His address at the time was in Paterson, Passaic County, New Jersey, U.S.A.. He noted in the letter that "I took hold of real estate and my most sanguine expectations have been realized" suggesting he had done quite well. This is probably how he afforded to erect a gravestone to his parents and the Chambers in Tassagh Cemetery near Keady. He appeared as an M.D. in the 1840 U.S. census in Paterson, Passaic County, New Jersey, U.S.A.. His household was composed of one male and one female under 5; two males between 5 and 10 probably William and Robert; one female between 10 and 15, probably Rachel; one male (Michael?) and three females between 15 and 20; as well as one male and one female between 40 and 50 presumably William and his wife Mary Ann. He died on 27 Dec 1849 in Flushing, Queens, New York, U.S.A., aged 57. His cause of death was noted as "cong. brain". His death entry in the New York index noted he was a physician. He had erected a gravestone in memory of his parents and the Chambers as well as his young daughter Jane in Tassagh Cemetery near Keady, Ireland.

By the fall of 1843, Doctors Marsh, Binsee, Burr, Terhune and Riggs petitioned the Medical Society of New Jersey for the organization of The Passaic County Medical Society, and on January 16, 1855 at the Franklin House on Main Street the county society was formally organized with Garret Terhune, M.D. the first president, Dr. Burr, secretary, and Dr. Magee, treasurer.



cont. on page 2

## Club News

The Passaic County Historical Society Genealogy Club holds meetings 10:00 a.m. at Lambert Castle Museum on the second Saturday of the month from September through May (unless otherwise specified).

Meeting dates for the 2012 year are as follows:

### Saturday, April 14, 2012

**20th Century WWI & WWII Military Records**

Presented by Toni McKeen

### Saturday, May 12, 2012

**Silent Cities, Graveyards, Churchyards and Cemeteries**

Presented by Peter Osborne

### Saturday, June 9, 2012

**Bus Trip to Bucks County Pennsylvania.**

On June 9, 2012, the Genealogy Club will sponsor a bus trip to historic Bucks County Pennsylvania. The cost of the trip is \$55 and includes lunch. The bus will leave the Castle at 8:45 a.m. and will return at approximately 5 p.m.

The first stop will be at the unique Byer's Choice facility. Then it's on to the historic Plumsteadville Inn for a delicious lunch. Our final stop will be the Pearl S. Buck House and Historic Site. Originally built in 1835, the Bucks County, Pennsylvania farmhouse was home to Pearl S. Buck and her international family for 38 years.

The trip is open to everyone, so if you plan to join us, please return your reservation form early. See the enclosed flyer and reservation form for more information.

For more information about any of these events, please contact the PCHS office at 973-247-0085 extension 200.

## Passaic County Historical Society Genealogy Club

Lambert Castle, Valley Road, Paterson, New Jersey 07503

(973) 247-0085 • FAX (973) 881-9434

[www.rootsweb.ancestry.com/%7Enjpcgsc/](http://www.rootsweb.ancestry.com/%7Enjpcgsc/)

### OFFICERS

President .....	Annita Zalenski
Vice President .....	Judi Bonzkowski
Recording Secretary .....	Pat Van Steyn
Treasurer .....	Marie Mahler
Corresponding Secretary .....	John Koontz

All Members are invited and encouraged to submit material for publication in *The Castle Genie*. We will try to publish at least a portion of everything we receive. Information is published as submitted and has not been verified. Material will be printed as space permits. When information is extracted from another publication, please give proper credit.

Send material to: Passaic County Historical Society Genealogy Club  
Lambert Castle, 3 Valley Road, Paterson, New Jersey 07503

For Membership information, please contact the PCHS office at 973-247-0085.

## Italian Americans of Northern New Jersey

Dr. Sandra Lee of Seton Hall University, author of "Italians of Belleville and Newark," is gathering material for a new book, "Italians of Northern New Jersey."

In addition to old photographs, Dr. Lee seeking information about the immigration experience, Italian neighborhoods, churches, Italian American organizations, Italian American newspapers, Italian American Soldiers, Columbus Day in NJ, etc.

If you have information or material you would like to share with Dr. Lee, she can be reached at: Sandra.lee@shu.edu; phone: 862-520-5383.

Facebook: <http://www.facebook.com/italianheritage>.



## Introduction to Genealogy

**Tuesday, April 17 & Wednesday April 18**  
**7:30 pm at Ringwood Library**

Genealogy Club member Diane Winters is conducting an Introduction to Genealogy program at the Ringwood Library. This hands on program is sponsored by the PCHS Genealogy Club.

Ages 12 and up are welcome.

The program will be held on two successive evenings: Tuesday, April 17 and Wednesday April 18 at 7:30 pm. The first night will be a "how-to" with some time at the end of the evening set aside for research. The second session will be devoted to searching free web sites.

If any club members are interested in assisting Diane with this outreach project, please contact her at: [seasons@cybernex.net](mailto:seasons@cybernex.net).

**Ringwood Library**

**30 Cannici Drive, Ringwood, NJ 07456**

**973-962-6256 [ringwoodlibrary.org](http://ringwoodlibrary.org)**



## John Magee *cont. from page 1*

*Transactions of the Medical Society of New Jersey, 1880, page 126.* A comment that In 1843 Dr. William Magee, of Paterson, who then had the largest practice of any physician in this vicinity.

3. **Jane MAGEE** was born on 23 Aug 1818 in Dunlurge, Keady, County Armagh, Ireland. She died in Jun 1819 in Dunlurge, Keady, County Armagh, Ireland.

3. **John MAGEE** was born circa 1822 in Ireland. He was noted as being at university and was almost finished his degree on 10 Aug 1838. He was noted as a physician in the 1850 census in Paterson, Passaic County, New Jersey, U.S.A.. He was living with his mother and four siblings. He also noted as having real estate valued at \$3,000. He died on 26 Jan 1851 in Paterson, Passaic County, New Jersey, U.S.A.. There is conflicting information as to whether he was married or not and whether he died on the 26th or the 28th.

3. **Mary M. MAGEE** Her married name was **SHEPARD**. She was born in Jul 1824 in Ireland. She was noted in the 1850 census living with her mother and four siblings in Paterson, Passaic Co., New Jersey, U.S.A. She married **Charles Henry SHEPARD**, son of **Isaac SHEPARD** and **Deborah MILLS**, on 11 Jun 1856 in Paterson, Passaic County, New Jersey, U.S.A.<sup>23</sup> She was noted in the 1860 Census in Barton, Tioga, New York, U.S.A.. She was living with her husband, brother Samuel and Mary McLary aged 15. Charles Henry, her husband, was recorded as a cashier of banking. She was noted in the 1870 census in Barton, Tioga County, New York, U.S.A.. She was living with her husband (retired banker), children Prentice and Margaret who were attending school. The household also had a domestic servant. She was recorded in the 1880 census in Barton, Tioga County, New York, U.S.A.. She was living with her husband, two children and a servant. She was noted in the 1900 census in Waverley, Tioga County, New York, U.S.A.. She was living with her husband, son Isaac and his wife and two grandchildren (surname Blood). The family had one servant.

4. **Anna R. SHEPARD**<sup>28</sup> was born circa 1856.<sup>29</sup> She died on 18 Aug 1873.

4. **Unknown SHEPARD**<sup>30</sup> died before 1900.

4. **Issac Prentice SHEPARD** was born circa Jan 1862 in New York, U.S.A. He was recorded as 'at school' in the 1880 census in Barton, Tioga County, New York, U.S.A. He married **Marion R. RUTHVEN**, daughter of **Sarah C. (-?-)**, circa 1900. He was noted as an electrician in the 1900 census in Waverly, Tioga County, New York, U.S.A.. He was living with his new wife with his parents. He was noted as living on his own income in the 1910 census in Chemung Street, Barton, Waverley, Tioga County, New York, U.S.A.. His household was composed of his wife, mother in law, two nieces (surname Blood) and a servant.

4. **Margaret L. SHEPARD** married **(-?-) BLOOD**. She was born circa 1864 in New York, U.S.A. She was recorded as 'at School' in the 1880 census in Barton, Tioga County, New York, U.S.A. She died before 1900.

3. **Rachel MAGEE**. Her married name was **BRUNDRED**. She was born on 26 Jun 1826 in Ireland. She married **William G. or J. BRUNDRED** on 21 Sep 1848 in Paterson, Passaic County, New Jersey, U.S.A. She was recorded as keeping house in the 1880 census in Oil City, Venango County, Pennsylvania, U.S.A., living with her husband. She died on 27 Feb 1901 in Venango County, Pennsylvania, U.S.A., aged 74.

4. **William F. BRUNDRED** was born on 28 Jun 1849 in Paterson, Passaic County, New Jersey, U.S.A.

4. **William Magee BRUNDRED** was born in 1851. He died in 1856.

4. **Mary Elizabeth BRUNDRED** was born in 1853. She died in 1855.

4. **Charlotte Louise BRUNDRED**. Her married name was **LOOMIS**. She was born in 1855 in New Jersey. She married **Stanley LOOMIS** on 8 Oct 1873. She was recorded in the 1880 census in Pittsburgh, Allegheny, Pennsylvania. She was living with her husband, and two children and a servant. She died in 1887.

4. **Lizzie BRUNDRED** was born in 1857. She died in 1869.

4. **Kate BRUNDRED** was born in 1860. She died in 1860.

3. **Michael MAGEE** was born on 10 Jul 1826 in Dunlurge, Keady, County Armagh, Ireland. He may have died before 10 Aug 1838 as he is not mentioned in his father's letter to relatives in Ireland.

3. **William Chalmers MAGEE** was born circa 1831 in Paterson?, Passaic County, New Jersey, U.S.A. He was noted as being in school on 10 Aug 1838. He was noted in 1847 as beginning to study under his father in Paterson, Passaic County, New Jersey, U.S.A. He died either Aug 1850 or 1889 in Paterson, Passaic County, New Jersey, U.S.A.. Which is the correct William C. Magee? The 1889 reference stated that he was noted as an M.D. which fits with the note in 1847 that he training under his father. The 1850 reference stated he was a 19 year old clerk who died of cholera.

3. **Robert C. MAGEE** was born circa 1832 in Paterson?, Passaic County, New Jersey, U.S.A.<sup>51</sup> He was noted as being in school on 10 Aug 1838. He was noted in the 1850 census living with his mother and four siblings in Paterson, Passaic Co., New Jersey, U.S.A.. He was also noted as attending school. He appeared on the census of 1880 in Paterson, Passaic County, New Jersey, U.S.A. He died on 27 Oct 1898 in Paterson, Passaic Co., New Jersey, U.S.A.. He was noted as single, a clerk and that both his parents had been born in Ireland.

3. **Elizabeth MAGEE** was born circa 1838 in New Jersey, U.S.A. She was noted in the 1850 census living with her mother and siblings in Paterson, Passaic Co., New Jersey, U.S.A.. She was also noted as attending school.

3. **Samuel F. MAGEE** was born circa 1840 in New Jersey, U.S.A. He was noted in the 1850 census living with his mother and siblings in Paterson, Passaic Co., New Jersey, U.S.A.. He was also noted as attending school. He was noted as a clerk in the 1860 Census. He was living with his sister Mary and her husband in Barton, Tioga County, New York, U.S.A. He died on 6 Apr 1862 in Baltimore, U.S.A.. His address was given as Paterson, New Jersey.

2. **Dr. Samuel MAGEE** was born on 9 Sep 1793. A Samuel Magee was noted in 1812 as a medical student at Edinburgh University. He was not recording as graduating. He married **Jane Eliza KIDD**, daughter of **George KIDD** of Greenmount and Tullyglush and **Mary Margaret McKINSTRY**, circa 1817. He was noted on 18 Oct 1827 in Keady, County Armagh, Ireland. Dr. Samuel paid £51 to William Kidd of Dundrum for some lands in Dunlurge. He was noted 20 Oct 1832 Keady, County Armagh, Ireland. Samuel and John took over a 20 year lease on lands in Dunlurge, near Keady. He was noted in a letter from his brother William on 10 Aug 1838 in Keady, County Armagh, Ireland. He died on 1 Jan 1845 in Keady, County Armagh, Ireland, aged 51. The Armagh Guardian newspaper of 7th January 1845 (page 2, col 5) noted that he had for upwards of 29 years filled the responsible situation of Medical Officer to the Dispensary in Keady. The same paper (page 3, col 2) recorded that the Governors of the Keady Dispensary held a meeting in the Market House on the 3rd of January and passed motions lamenting his death and setting up a public subscription to place a suitable

*cont. on page 4*

## John Magee *cont. from page 3*

testimonial in the church, passing on their sympathy to his family (unnamed!) and to place an advert in the newspapers looking for a replacement!

3. **Unnamed male MAGEE** was born in 1817. He died in Dec 1817.

3. **Margaret MAGEE**. Margaret was born in Ireland circa 1821. She married **Watson KIDD** in Maddon, County Armagh, Ireland, on 23 May 1839. She died on 22 Jan 1864.

4. **Selina Elizabeth KIDD** was born on 11 Dec 1840 in Keady, County Armagh, Ireland.

4. **Jane Ann 'Dory' KIDD**. Jane was born in Keady, County Armagh, Ireland, on 18 Oct 1842. She married **Robert GLEN** in Presbyterian Church, Malire Parish, Belfast, County Antrim, Ireland, on 27 Dec 1873. Jane died on 7 Jul 1910 in 32 Dublin Street, Edinburgh, Scotland, aged 67.

4. **Emily Elizabeth KIDD** was born on 21 Nov 1844 in Keady, County Armagh, Ireland.

4. **Samuel KIDD** was born on 7 Feb 1847 in Keady, County Armagh, Ireland.

4. **Marianne Isabelle KIDD** was born on 17 Feb 1849 in Keady, County Armagh, Ireland.

4. **Margaret Emma KIDD**. Margaret may have been living with Henry Graham Glen's family at Malone Park (possibly as a domestic or as a guest!) at the time of her death. She was born on 16 Jan 1856 in Armagh, County Armagh, Ireland. Margaret died on 1 Jun 1877 in Malone Park, Belfast, County Antrim, Ireland, aged 21.

3. **Anne MAGEE** was born circa 1823 in Keady, County Armagh, Ireland. A letter to Anne dated the 10th August 1838 from her Uncle William Magee mentions that he had last seen her 10 or eleven years previously and she was had been "smiling little cherub, with laughing blue eyes, blooming cheeks and lustrous locks". This suggests that she was about 3-4 years old in circa 1827 so born circa 1824. She married **James GREENE** in Keady, County Armagh, Ireland, on 5 Apr 1843. Both of the couple were single, of full age and of Keady. The witnesses to the wedding were Samuel Magee and James Kirk. Ann was noted as the eldest daughter of Dr. Magee. She was recorded in 1870 in 55 Ormeau Place, Belfast, County Antrim, Ireland. The alphabetical list in the Belfast and Ulster Directory recorded her as Mrs. Green but the street listing recorded her as Mrs. Greene. The street numbering is contiguous from Ormeau Road to Ormeau Terrace to Ormeau Place. Number 55 was between Donegall Pass and Coyle Street. So it seems that Henry moved in with his mother in law! She was the informant of her grandson Henry Graham Glen's birth on 8 Sep 1875 in Lower Sydenham, County Down, Ireland. She was noted on 26 Apr 1879 as Mrs James Green of New York staying with the Glens in 1 Cary Parade, Torquay, Devon, England. She stayed with them until 19th of July of the same year. A Mrs Green was noted staying with the Glens on 11 Apr 1883 in 1 Cary Parade, Torquay, Devon, England. She stayed with them until the family moved on the 1st of July 1885. Anne died on 14 Jul 1886 in 141 Nassau Street, Brooklyn, Kings County, New York, U.S.A.. Anne died at the residence of her son in law, Robert Goudy and daughter Anne. She was noted as the relict of James Greene late of Laragh and New Holland, Cady (sic). The Brooklyn Eagle newspaper of 14th July 1886 (pg 3 col 1) noted that Anne Greene was the widow of James Greene of Laragh House, County Monaghan, Ireland and daughter of the late Dr. Samuel Magee of Keady, County Armagh. The paper noted she had been ill for some time and her funeral was a private affair. She was buried at Evergreens. (Evergreens is a cemetery in

Brooklyn, New York). Family tradition has it that Rhoda's mother sailed back and forth across the Atlantic on many occasions visiting her children after she had become an invalid. She appears to have enjoyed the travelling more than the visiting. The passenger list for the S.S. Pennsylvania from Liverpool via Larne to New York dated 5th June 1873 (page 4) had a saloon passenger Mrs Green, aged 53, Irish. Was this Anne going to stay/visit with her daughter Ann Goudy in Brooklyn? But she was back in Belfast on 8 Sep 1875. It appears that after Rhoda and family moved to Torquay, Ann went to New York arriving on the 7th of August 1878 on board the SS State of Pennsylvania. A Mrs. Green, aged 58 born Ireland travelled cabin class (the best accommodation category on the vessel). The vessel sailed from Glasgow via Larne, Ireland. The Torquay Times & South Devon Advertiser for April 26 1879 recorded that Mrs James Greene of Brooklyn New York was visiting Rhoda and Henry in Torquay. The newspaper noted her presence until July 12 of that year. On Oct 8th 1884 a Mrs Green was noted with the Glens and stayed until July 1st 1885.

4. **Anne Elizabeth 'Nancy' GREENE**. Anne was born in Armagh, Ireland, on 16 Feb 1844. The 1900 Census confirms her birth as February 1844. She was noted as having immigrated from Ireland to the United States in 1868. She married **Robert GOUDY** in Ireland or New York? circa 1869. She appeared on the 1880 U.S. census living with her husband and two children in Brooklyn, New York City, New York, U.S.A. She was noted in the 1900 census in Delaware Ave, Dongan Hill, Staten Island, Richmond County, New York, U.S.A.. She was listed as Mrs Robert Goudy, a widow, who had two children who are now both dead. She noted that she had been in the U.S. since 1868, owns her own home but with a mortgage. She was noted in the 1910 census in 24 Delaware Ave, Dongan Hill, Staten Island, Richmond County, New York, U.S.A.. She was recorded as a widow who had had two children one of which was still alive. She was also noted as having arrived in the U.S. in 1868. She still owned her own home but also still had the mortgage. She was recorded arriving in New York on board the S.S. Campania from Liverpool on 3 Feb 1912 with \$25 in her purse. She was noted as having been a U.S. citizen since 18th October 1873. She had been visiting Hawthorn Cottage, Adel, Leeds and her final destination was given as Brooklyn, New York. (Hawthorn Cottage is believed to have been the address of her sister Rhoda M. Glen.) Her description was height 5 foot, complexion fair, hair grey and eyes brown. She was going to join friends? Pitfield at 466 77th Street, Brooklyn, New York. (The 1910 and 1920 census did not show any Pitfields at the address). Anne died on 16 Mar 1916 in 297 Jewett Ave, West New Brighton, New York, aged 72. Her cause of death was noted as cerebral Haemorrhage for 13 hours. She was placed in the Moravian Cemetery Receiving Tomb (#6), 2205 Richmond Road, Staten Island, New York. Her body was removed on 26 January 1917 and taken to Oceanview Cemetery, Staten Island.

4. **Mariah GREENE**. Mariah was born in Ireland. Mariah died after 1871.

4. **Rhoda Margaret GREENE**. Family tradition has it that Rhoda managed the linen mills in Ireland and often went to Ireland from Yorkshire when needed. It is also believed that she did not sell the mills before 'the Irish troubles' and lost a great deal of money (Is this the usual lost family fortune story!). She is believed to have been keen on driving horses and went to the Dublin Horse show every year. Another tradition say she was interested in single handed yachting. Rhoda was born in Keady, County Armagh, Ireland, on 6 Oct 1846. She was baptised on in the Church of Ireland, Keady. She married Henry Graham GLEN in May Street Presbyterian Church, Belfast, County Antrim, Ireland, on 30 Dec 1871. Rhoda died on 26 Mar 1918 in 5 Clifton Villas, Otley, England, aged 71. Her estate was probated on 13 Jan 1919 in

*cont. on page 5*

## John Magee *cont. from page 4*

Wakefield, Yorkshire, England. Her address was given as 3 Clifton Villas, Otley, Yorkshire and the value of her estate was valued at £478/18/8. The estate was awarded to her daughter Amy Glen.

**4. James GREENE.** The S.S. Europa was a ship of the Anchor Line which offered weekly steam service from Glasgow to New York. It had sailed from Glasgow via Moville, Ireland on July 1st 1871 with merchandise and 265 passengers. James died 5 days after departure and 8 days before the ship arrived in New York. He was buried at sea at noon on the 6th of July. The passenger list for the voyage noted that James was travelling in steerage, was 23 years old, a hairdresser, and was born in Ireland. (He was the only death on the voyage and appeared to have been travelling alone.) When the ship arrived in New York a Mr. Glen was noted as a passenger in the New York Times. This turned out to be John Glen, a 26 year old traveller, native of Scotland. John was travelling alone as a cabin passenger and did not appear to have any connection with James (just a coincidence!). James was born in New Holland, Keady, County Armagh, Ireland, on 12 Mar 1848. James was baptised on the 30th of April 1848 in the Church of Ireland in Keady. James died on 6 Jul 1871 in S.S. Europa on route to New York, at sea, aged 23.

**3. George MAGEE** was born on 18 Oct 1825 in Keady, County Armagh, Ireland. He died on 19 Nov 1845 in Keady, County Armagh, Ireland, aged 20.

**3. Elizabeth (Lizzie) Chambers MAGEE** was born on 31 Mar 1830 in Keady, County Armagh, Ireland. She married Archibald MCCORKELL Esq. of Londonderry on 23 Aug 1855 in Warrenpoint Church, County Down, Ireland. She died after 23 Aug 1855.

**3. Sophia Eleanor MAGEE** was born on 22 Jan 1835 in Keady, County Armagh, Ireland. She married (-?-) GARDINER before 4 Apr 1864. She died after 4 Apr 1864.

**3. Samuel Chambers MAGEE** was born on 1 Jan 1840. He was noted 24 May 1864 Dunlarge Cottage, Keady, County Armagh, Ireland. This was mentioned in a grant in perpetuity of a lease of 3 acres in Dunlarge from James Blair of Tassagh to Samuel Chambers Magee for the annual rent of £2/17/5. He married **Mary Sophia McKEE**, daughter of **Rev. James McKEE and Jane BEATTIE**, on 10 Nov 1869 in Belfast, County Antrim, Ireland. They were both noted as unmarried Presbyterians. Mary was recorded as of Belfast, daughter of James McKee, minister. Samuel was noted as of Balmoral, Belfast, a merchant and son of Samuel Magee a medical doctor. He was noted in 1880 as having new stables constructed in Melvyn House, Malone Park, Belfast, County Antrim, Ireland. Samuel appeared to have had Melvyn House built between 1870 and 1875 and occupied it until his

death in 1886. His widow continued to occupy the house until she remarried at which time George Magee Samuel's only son occupied it until his death in 1923. He died on 5 Apr 1886 in Melvyn House, Malone Park, Belfast, County Antrim, Ireland, aged 46. He was buried in the Borough Cemetery, Belfast. Samuel's will was valued at £19,534/16/10 when it was granted on the 6th of May 1887. He was noted as a linen merchant and late of Malone Park, Belfast. Samuel was noted in the various business directories as being in the linen business. The 1884 directory noted that he was part of Kirk and Partners of Donegal Square West, Belfast. Documents relating to the settlement of his estate show he was a major shareholder in the business.

**4. Sophia Margareta MAGEE** was born on 16 Oct 1870 in Belfast, County Antrim, Ireland. She married Alfred Oscar KOLKHORST on 7 Jan 1897 in Valparasso, Chile. As of 7 Jan 1897, her married name was KOLKHORST.

**4. George McKee MAGEE** was born on 4 Mar 1872 in Belfast, County Antrim, Ireland. He married Elizabeth COCKRANE in 1904. He was noted as a linen merchant in the 1911 census in 53 Adelaide Park, Windsor Ward, Belfast, County Antrim, Ireland. His household was composed of his wife, three children and two servants and they were living in 16 room house. He died on 5 Jun 1923 at work in Donegall Street, Belfast, County Antrim, Ireland, aged 51. His will left everything to his wife. George continued in his father's linen business all his life as shown in the business directories from 1887 to 1923. He also continued to occupy the family home of Melvyn House (number 32) in Malone Park, Belfast.

**4. Ethel (or Jane) Elizabeth MAGEE** was born on 15 Oct 1873 in Belfast, County Antrim, Ireland. She appeared on the census of 1911 in 39 Rugby Road, Cromac, South Belfast, County Antrim, Ireland.

**4. Edith Isabel 'Eta' MAGEE** was noted in Malone Park, Belfast, County Antrim, Ireland. She was born in Jan 1875 in Belfast, County Antrim, Ireland. She died a spinster on 7 Mar 1900 in Belfast, County Antrim, Ireland, aged 25.

**3. Emily Jane MAGEE** was born before 1843. She married William Teneson COLLINS M.R.C.S. on 12 Jan 1846 in Armaghbrague, near Keady, County Armagh, Ireland. She died on 28 Mar 1895.

**3. Isabella MAGEE** was born before 4 Apr 1843. She married (-?-) LOUCH before 4 Apr 1864. She died after 4 Apr 1864.

Prepared by: William M. Glen CG(C)  
Bonshaw, Prince Edward Island, C0A 1C0  
wglen@auracom.com

*Note: A copy of this MAGEE Genealogy with source notes can be found in the Compiled Family Files in the Passaic County Historical Society Library.*

## FOLK FINDER

The Folk Finder Column is devoted to helping genealogical researchers locate Northern New Jersey ancestors/descendants. We invite researchers to submit requests for help, inquiries about family names, or queries concerning the exchange of information. Inquiries may be e-mailed to <pchsgc@yahoo.com>.

Queries by mail should be sent to:

Passaic County Historical Society Genealogy Club "Folk Finder," Lambert Castle, 3 Valley Road, Paterson, New Jersey 07503.

If you can help any of our submitters, please contact them directly.

**1. VANHECKE:** Linda Bergren Polich is seeking any information on the family of Bruno VANHECKE who lived in the Paterson, NJ area in the early 1890s. Bruno VANHECKE was married to Marie VANHOOKE in 1890 in Belgium. They had several children, two who were born in Paterson: Matilda b. 1894 and Marie b. 1897. (Matilda is the submitter's grandmother.) **Submitted by: Linda Bergren Polich, 1698 Glenwood Heights, Coal Valley, IL 61240-9284 e-mail bergie1985@frontiernet.net.**

# Passaic County Place Names

**AAQUANAC** (See Acquackanonk)

**ABERCROMBIE ISLAND** An island in Greenwood Lake, between the west shore and Fox Island (also known as Pine Island)

**ACHEQUEKNONK** (See Acquackanonk)

**ACHQUEKNONK** (See Acquackanonk)

**ACKERMAN'S RUN** A small stream 2 miles long, flowing to the Passaic River, about 3 miles below Paterson, from Saddle River Township.

**ACQUACKANONK** The area that is today the city of Passaic and the southern part of Paterson, in Passaic County, N.J., and Wallington, in Bergen County, N.J. The name is said to be Indian for "place in a rapid stream where fish are caught" or "bush net in the rapid stream." In 1851 the railroad named the community Huyler's, after the family name of their RR agent. On April 25, 1854 the station name was changed to Passaic. Also Achquickenunck, Aquechonenque, Haghquichenunck, Hockquickanon, etc. See various other early spellings below. Included The Bogt (later called Riverside), and the Gotham neighborhood.

**ACQUACKANONK TOWNSHIP** was formed (with New Barbadoes Township, the two together as one township) October 31, 1693 as an Essex County township. In 1710, New Barbadoes Township was set off to Bergen County; Acquackanonk Township remained in Essex County. In 1837 Acquackanonk Township was set off to Passaic County. Through the years parts of Acquackanonk Township were transferred to other communities, including Caldwell Township (1798); Paterson Township (1831); Little Falls Township (1868); Passaic Village within Acquackanonk Township (1869); Paterson City (1869); Montclair Town, in Essex County (1907); until in 1917 Acquackanonk Township became Clifton City.

**ACKQUIGGENONCK** (See Acquackanonk)

**AGAWAN LANDING** (See Passaic)

**ALLWOOD** A locality in the City of Clifton.

**APSHAWA** A locality in West Milford Township.

**AQUAKANONK** (See Acquackanonk)

**AQUEYQUINONKE** (See Acquackanonk)

**ATHENIA** A locality in Clifton. Athenia was a section of Acquackanonk Township, and is now a part of Clifton. Earlier known as Cloverack ("clover field"). The Newark branch of the Erie Railroad called it Centreville, but when a post office was established there on 16 March 1883, the name was changed to Athenia because there already was another Centreville in New Jersey. Other early names for

the neighborhood were "Cheap Josie's" (about 1880; origin unknown) and Tome's Mill after the sawmill and lumber business run there by J. Tome.

**AWOSTING** A locality in West Milford Township, Passaic County, N.J.

**BEANTOWN** An area in Clifton.

**BEARFORT MOUNTAIN** A locality in West Milford Township, Passaic County, N.J. Possibly deriving its name through folk etymology from the Berresford family who lived in this vicinity.

**BERGEN COUNTY** originally included the area that is today Hudson County, and part of the area that is today Passaic County. The county was established in December 1682 when the Assembly of East Jersey divided the Province into four original counties: Bergen, Essex, Middlesex, and Monmouth. On October 31, 1693 Bergen County was divided into Bergen and Hackensack Townships. In 1709 (January 21, 1710) New Barbadoes township was transferred from Essex County to Bergen, and became its county seat. On February 7, 1837 part of Bergen County's area was transferred to form Passaic County. On February 22, 1840 an area of Bergen County, including the ancient settlement of Bergen, was set off as Hudson County. On February 19, 1852 part of Harrison Township, of Hudson County, was added to Bergen County as Union Township.

**BLOOMENDAAL FURNACE** (See Bloomingdale)

**BLOOMINGDALE** A borough in Passaic County formed February 23, 1918, from Pompton Township. An iron furnace was established there about 1761 by John and Uzal Ogden, and a forge was built there about 1800 and owned by Martin Ryerson before 1833.

**BLOOMSBURG** Lower Preakness in Wayne.

**BOARDVILLE** An area in Ringwood Borough.

**BOGT, THE** A section of the Acquackanonk patent which encompassed land in present Paterson in Passaic County. Also called the "De Bogt" or "Bogt Patent" meaning the Patent in the bend (of the river). The division was made in 1714. This section was later known as Riverside.

**BROWN'S** A locality in West Milford Township.

**BUCKBEAR** A locality in West Milford Township, Its name was possibly derived through folk etymology from that of the Buggebehr (pronounced Buckbear) family that lived in the area.

**CANISTEER** A locality in West Milford Township.

*cont. on page 7*

**CAULD BERGH** A locality between Preakness (Wayne) and Wagaraw (Hawthorne). The "Cauld Bergh" Deed dated 6 July 1804, from Daniel Dod and Frances, his wife, to Cornelius Peterson notes the location as the "...meeting of two small brooks at a place called by the dutch Cauld Bergh..."

**CENTREVILLE** Early name for the Athenia section of Clifton. For a brief period, this section of Aquackanok Township, formerly called Cloverack, was called Centreville by the Newark branch of the Erie Railroad. When a post office was established here on 16 March 1883, the name was changed to Athenia because there already was another Centreville in New Jersey.

**CHARLOTTENBURG** (See Charlotteburg)

**CHARLOTTEBURG** A locality in West Milford Township. The site was established as an ironworks by Peter Hasenclever in 1765 and named Charlottenburg in honor of Charlotte, wife of George III of England.

**CLAVERACK** An area in Clifton.. For a brief period, this section of Aquackanok Township, formerly called Claverack, was called Centreville by the Newark branch of the Erie Railroad. When a post office was established here on 16 March 1883, the name was changed to Athenia because there already was another Centreville in N.J.

**CLIFTON** The City of Clifton was formed April 26, 1917 replacing Acquackanok Township. Includes Allwood, Athenia, Delawanna, and Richfield.

**CLINTON** (See West Milford)

**CLINTON FURNACE** (See West Milford)

**CLOVERACK** (See Claverack)

**CONKLINTOWN** A locality in Ringwood Borough.

**COOPER** A stop on the Greenwood Lake & Montclair Railroad, after Hewitt (until Awosting was created), just north of the dam on Greenwood Lake. It was named after, and probably by, Peter Cooper, the father-in-law of Abram S. Hewitt. Cooper and Hewitt ran the Ringwood Ironworks, including Long Pond Ironworks.

**CORTERVILLE** (See West Milford)

**DEGRAY'S MILLS** An early name for Hawthorne. Also called Morrow's Mills.

**DELAWANNA** A locality in Clifton City

**DONKER VAL** A stream in Paterson which rose near Madison and 21st or 22nd Avenues. Dutch for "dark brook."

**DUNKEN POND** (See Dunker Pond)

**DUNKER POND** Body of water near Charlotteburgh near Macopin. Also written Dunken Pond. The name is probably from the German [Dutch?], donker, meaning dark.

**ECHO LAKE** A locality in West Milford Township.

**ERSKINE LAKES** A locality in Ringwood Borough.

**GOFFLE [THE]** Area in what is part of present Midland Park in Bergen County, N.J. and Hawthorne and old Manchester Township in Passaic County, N.J. The name is from the Dutch "de Gaffel," meaning "the fork" and refers to the spot where old Indian trails split northeast of what became Paterson, one trail going toward Pompton, the other toward Hackensack.

**GOFFLE BROOK** A locality and waterway in Bergen County, N.J. and Passaic County, N.J. Also known as the Goffle.

**GREAT FALLS** Early name for the Paterson area.

**GREAT NOTCH** A locality in Little Falls Township.

**GREENBUSH** Early name for the vicinity that became Paterson, especially the area near Vreeland Avenue and Willis Street and the falls. Said to have been named because of the many evergreen trees in the area. Also spelled Groenbos.

**GREENWOOD** (See Passaic)

**GREENWOOD LAKE** A locality in West Milford Township. The lake itself is partly in New Jersey and partly in New York State.

**GROENBOS** (See Greenbush)

**HALEDON** Haledon Borough was formed April 8, 1908, replacing Manchester Township. As early as 1825 this section was called Oldham. The name Haledon (possibly after the town of Hilden in Ireland) was in use from 1858, but for many years both names were used for the locality.

**HARSENVILLE** (See Bloomingdale)

**HAQUEQUENNONCK** (See Acquackanok)

**HAQUEQUENNUNCK** (See Acquackanok)

**HASKELL** A locality in Wanaque Borough.

**HAWTHORNE** Hawthorne Borough, on the Passaic River, in Passaic County, N.J., was formed March 24, 1898 from Manchester Township. In 1909 Hawthorne had 2 railroad stations: on the New York, Susquehanna and Western Railroad and the Erie Railroad. Includes Wagaraw. Earlier names for the locality included DeGray's Mills and Morrow's Mills. In August 1867 the Erie Railroad began stopping at a station here that was briefly known as Norwood. When a post office was established here in January 1868, however, it was found that another Norwood existed in New Jersey, and so the name of Hawthorne was adopted on 24 August 1868.

*To be continued in the Summer 2012 issue.*