



The Castle Genie

Summer 2012
Vol. 20 • No. 2

NEWSLETTER OF THE GENEALOGY CLUB
Passaic County Historical Society, Lambert Castle, Paterson, New Jersey

Wanaque Reservoir's Coming Brought Mixed Reactions

Herald News, August 2, 1968

The Wanaque Reservoir has played an important part in the lives of local residents. Its scenic beauty has been admired by visitors to the area along Ringwood Avenue, the borough's main and only thoroughfare and many residents have located their homes by association with the reservoir.

When the idea for the project was conceived the borough was both sad and happy. Happy because the reservoir was to be an outstanding asset to the community. Sad because the Wanaque Valley Paper Mill and many homes scattered throughout the hills and valleys were to be replaced by the 10-mile stretch of reservoir. Seventy buildings and homes were removed, seven miles of highway and six miles of railroad were relocated.

Four small cemeteries had to be removed to make way for the watershed. The Brown Cemetery was moved according to the wishes of Squire Edward J. Brown to a tract in Midvale Cemetery and fenced in. There were 65 graves and tombstones all in good condition. The Ryerson Cemetery was also moved according to the wishes of the family to the Midvale Cemetery.

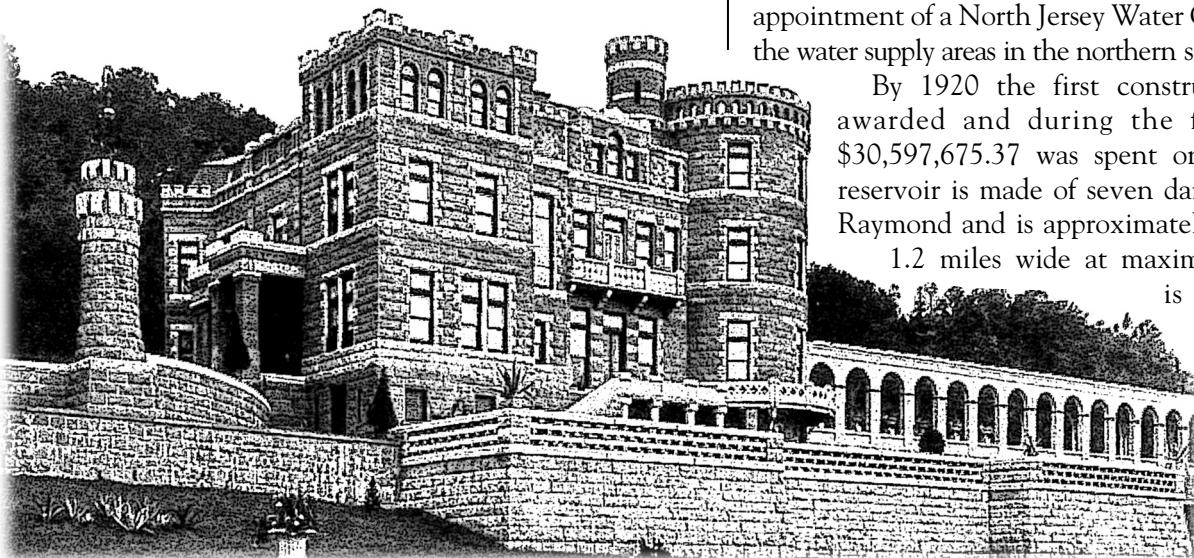
At the request of the Board family the 19 graves there were reinterred in a lot purchased by the reservoir commission in the Pompton Reformed Church Cemetery. The old stones were repaired where possible, and others were replaced. The commission obtained brownstone from Connecticut and duplicated the old style inscriptions on the new grave markers.

The Erskine Cemetery was in a dilapidated state. There were few monuments and no record of burials. Since the location of some of the graves could not be known, the whole area to a depth of six feet was turned over and all remains removed. Where identity was possible remains were placed with the consent of living relatives in Midvale Cemetery, Pompton Reformed Cemetery, Butler Cemetery and Bernardsville Cemetery. The total cost for removing 256 bodies and 37 tombstones was \$17,865.44.

The Wanaque Basin was as a source of water supply for Newark was first studied in 1879 and again in 1907. Paterson protested that Wanaque's natural watershed should not be lost as a source for Passaic County. In 1916 a joint effort by Newark and Paterson resulted in the appointment of a North Jersey Water Commission to govern the water supply areas in the northern section of the state.

By 1920 the first construction contract was awarded and during the following 10 years \$30,597,675.37 was spent on the reservoir. The reservoir is made of seven dams; the largest is the Raymond and is approximately 6.6 miles long and 1.2 miles wide at maximum.

Raymond Dam is an earth structure with concrete corewall extending from the waterflow line down to solid bedrock.



cont. on page 3

Club News

The Passaic County Historical Society Genealogy Club holds meetings 10:00 a.m. at Lambert Castle on the second Saturday of the month from September through May (unless otherwise specified).

Meeting dates for the 2012 year are as follows:

Saturday, September 8, 2012

Program to be announced.

Saturday, October 13, 2012

Program to be announced.

Saturday, November 10, 2012

(Meeting will be held at the Hawthorne Library, 345 Lafayette Ave., Hawthorne, NJ.)

Program to be announced.

Saturday, December 8, 2012

(Meeting will be held at the Hawthorne Library, 345 Lafayette Ave., Hawthorne, NJ.)

Annual Holiday Brunch and Silent Auction

For more information about any of these events, please visit our website at:

www.rootsweb.ancestry.com/%7Enjchsgc/contact

or contact the PCHS office at:

973-247-0085 x200.

Passaic County Historical Society Genealogy Club

Lambert Castle, Valley Road, Paterson, New Jersey 07503

(973) 247-0085 • FAX (973) 881-9434

www.rootsweb.ancestry.com/%7Enjchsgc/

OFFICERS

President	Annita Zalenski
Vice President	Judi Bonzkowski
Recording Secretary	Pat Van Steyn
Treasurer	Marie Mahler
Corresponding Secretary	John Koontz

All Members are invited and encouraged to submit material for publication in *The Castle Genie*. We will try to publish at least a portion of everything we receive. Information is published as submitted and has not been verified. Material will be printed as space permits. When information is extracted from another publication, please give proper credit.

Send material to: Passaic County Historical Society Genealogy Club
Lambert Castle, 3 Valley Road, Paterson, New Jersey 07503

For Membership information, please contact the PCHS office at 973-247-0085.

Genealogy

Some think of it wise, some other wise,
To trace one's family tree;
For naught they see in family tree
Or in heredity.

They think the past dead should remain
At peace within the grave,
And of their life, what is the gain,
When, what or how they gave.

Although they may be partly right
Yet much more are they wrong;
Our fathers bore the Torch of Light
Which we must pass along.

So then if they have done much good
Each in his little way,
Is this not fine for mental food?
Just stop! and think! and pray.

If my forefather was a man
Of patriotic trend,
Then I shall try the best I can
My aims with his to blend.

Those souls who lived and walked with God
Show me the way to live;
And though they sleep beneath the sod
Yet constant good they give.

Wm. H. Rauchfuss
Preakness, NJ, July 6, 1935

A Toast to Our Flag

Here's to the flag that still is flying,
While the radical is crying
Threats of hate, and rights defying,
While it stands out true;
Hope, today, of every nation,
Bringing to oppressed elation;
Patriotism's true creation;
"THE RED, WHITE AND BLUE!"

Wm. H. Rauchfuss
To the Captain Abraham Godwin Chapter,
Sons of the American Revolution.
Paterson, NJ, June 11, 1924

Wanaque Reservoir *cont. from page 1*

Note: Burial listings for the Brown, Ryerson Board, and Erskine Cemeteries can be found in the book "Written In Stone" *Gravestone Inscriptions of Passaic County*, by Annita Zalinski. This publication has recently been reprinted in

softcover and is available for purchase at the Passaic County Historical Society Gift Shop or on line at www.rootsweb.ancestry.com/~njpchsgc/.

Brown, Board, Erskine and Ryerson Cemeteries of the Wanaque Valley



BROWN Cemetery prior to removal, July 13, 1921.



BOARD Cemetery prior to removal, April 26, 1921.



BROWN Cemetery during removal of bodies, July 26, 1921.



ERSKINE Cemetery, April 26, 1921.



BROWN Cemetery after removal to the Midvale Cemetery, August 18, 1921.



RYERSON Cemetery, April 26, 1921.

PETRY Family Bible

Presented to JOSIE PETRY by her Mother.

This Bible was donated to the Passaic County Historical Society by Mary Lombardo Willever, May 12, 2012.

A copy of the handwritten pages can be found in the Bible files in the library.

MARRIAGES

Frederick PETRY and Sally QUACKENBUSH were married
January 25th in the Year of our Lord 1823.

John PETRY and Caroline BRUSH were married
January 25th, 1845.

George F. PETRY and Sarah BRUSH were married April __.

Hannah PETRY and John DANIELS were married
March 26th, 1853.

Hannah DANIELS and George BILLSON were married
April 4th, 1860.

Daniel F. PETRY and Elizabeth ACKERMAN were married
March 26th, 1857.

Rinier PETRY and Eufehemia VAN DELINDA were married
February 22nd, 1860.

Sarah PETRY and Thomas BARRITT were married ____.

Elizabeth PETRY and Thomas BARRITT were married
January 24th, 1866.

Charles H. PETRY and Mary HETHERINGTON were
married October 3rd, 1879.

Mr. Horace E. PAGE and Mrs. Elizabeth PETRY were
married June 24th, 1889, Paterson, NJ.

Mr. Wallace BROWN and Miss Josie PETRY were married
November 11th, 1885, Paterson, NJ.

Edwin F. PETRY and Gertrude HORN were married
September 15th, 1897 at the parsonage of the Westminster
Church, 23rd St., NY, by the Rev. Robert F. Sample.

BIRTHS

These comprise all the births in the family of
Frederick and Sally PETRY.

Frederick PETRY was born October 21st, 1801.

Sally PETRY was born March 25th, 1801.

Marie PETRY was born October 27th, 1823.

John PETRY was born October 24th, 1824.

George F. PETRY was born September 13th, 1826.

Petry F. PETRY was born August 30th, 1829.

Ellen PETRY was born July 3rd, 183(?)

Hannah PETRY was born June 30th, 1833.

Margaret PETRY was born August 29th, 1835.

Daniel F. PETRY was born February 24th, 1838.

Reiner PETRY was born November 13th, 1840.

Sarah PETRY was born April 25th, 1843.

Elizabeth PETRY was born December 12th, 1845.

Abraham PETRY was born April 29th, 1848.

Wallace BROWN, son of Andrew and Mary BROWN
was born October 29, 1864 in Paterson, NJ.

Fannie BROWN, first daughter of Wallace and Josie BROWN,
born August 10, 1886, Paterson, NJ.

FAMILY RECORD

Daniel and Elizabeth PETRY family.

Daniel F. PETRY was born at Preakness, NJ, February 24th, 1838.

Elizabeth PETRY was born at the Ponds, NJ, May 7th, 1835.

They were married at Monsey, Rockland County, NY,
March 26th, 1857.

Their first son Charles PETRY was born at Preakness, NJ,
March 4th, 1858.

Their second son Daniel PETRY was born in the village of
Hackensack, NJ, February 28th, 1860.

Their third son was still born in the village of Hackensack, NJ,
August 6th, 1861.

Their fourth son was born in Jersey City, December 14th, 1862,
his name is Edwin Franklin PETRY.

Their first daughter Josephine PETRY was born in New York
City, January 20th, 1865.

DEATHS

Frederick PETRY family.

Maria PETRY died November 9th, 1823.

Hellen PETRY died September 5th, 1833.

Margaret Petry died September 12th, 1837.

Peter PETRY died September 23rd, 1851.

Reiner PETRY died March 1st, 1860.

Frederick PETRY died December 3rd, 1864.

Sarah PETRY died July 2nd, 1865.

Daniel F. PETRY family.

Our 2nd son Daniel PETRY died in the village of Hackensack,
April 11th, 1860, aged one month and eleven days.

Our third son was still born in the village of Hackensack,
August 6th in the year 1861.

Hannah PETRY died September 13, 1869.

Daniel F. PETRY died November 3rd, 1870.

Fannie BROWN, daughter of Wallace and Josie BROWN
died April 23, 1891, Paterson, NJ.

Elizabeth PETRY PAGE, died October 21, 1910 at West Palm
Beach, Florida. Buried in Plot No. 7 in Block 45.

Wallace BROWN, died April 15, 1945 in Paterson, NJ.

Mary BROWN wife of Wallace, died June 28, 1958.

Andrew J. BROWN, born June 3, 1834. Married to
Mary HILTON, May 13, 1857. Died March 13, 1914.

Mary BROWN, born April 29, 1835. Married to
Andrew J. BROWN. Died December 4, 1910.

Passaic County Place Names

Continued from the Spring 2012 issue.

HEWITT A locality in West Milford Township.

HICKORY MOUNTAIN A locality in Ringwood Borough.

HIGH MOUNTAIN A locality in North Haledon Borough.

HUYLER'S Community in Passaic County, N.J. originally called Acquackanonk until 1851 when the railroad named it Huyler's after the family name of the agent for the railroad at that place. Name changed April 25, 1854 to Passaic.

IRISHTOWN A section of Erskine in Ringwood, N.J.

JENNINGS HOLLOW A location noted between Hewitt and Sterling Forest, on Greenwood Lake, in what is today Passaic County, NJ.

KALKOENBERG A section of Paterson near Market and Madison Avenues.

KANOUSE MOUNTAIN A locality in West Milford Township. Its name derived from the Knauss family who lived in the area.

LAKE LOOKOVER A locality in West Milford Township.

LAKESIDE A locality in West Milford Township.

LAKEVIEW One of six sections of the City of Clifton in today's Passaic County. Formerly part of the area known as Acquackanonk. The area roughly north of Piaget Ave. to Crooks Ave., and from Hazel St. east to the Passaic River. The name was in use by 1880 or earlier.

LITTLE FALLS Little Falls Township was formed April 2, 1868 from Acquackanonk Township. Includes or included Great Notch, Notch Brook, and Singac.

LONG POND A locality in West Milford Township. Peter Hasenclever began the ironworks at Long Pond in 1766. Also the early name for Greenwood Lake.

LOWER MACOPIN A locality in West Milford Township.

LOWER PREAKNESS A locality in Wayne Township.

MACOPIN Locality in old Pompton Township (now West Milford). The name comes from an Indian word for which various meanings have been suggested, including "land of the wild potato," "Beaver Dam," "place where the pumpkins grow," and "pickrel waters." The body of water called Echo Lake was once called Macopin Pond. Erskine spelled it Makapien on some of his maps; another early spelling is Makapin.

MANCHESTER Manchester Township was formed February 7, 1837 from Saddle River Township, Bergen County, and set off to Passaic County. Through the years parts of its area transferred to Wayne Township (1847); Paterson City (1854, 1855); Totowa Borough (1898); Hawthorne Borough (1898); Prospect Park Borough (1901); and North Haledon Borough (1901). On April 8, 1908 Manchester Township became Haledon Borough. Includes or included a locality called the Goffle.

MEAD'S BASIN A locality on the Pequannock River, in the Mountain View section of Wayne Township near the Morris Canal Towpath. The Mead family was prominent in this section, and Andrew H. Mead (d. 1867) ran a hotel here. The area was known for a large clay deposit, used in brick making. Also written

Meade's Basin. Mead's Basin Postal Service —A Bergen County post office named Mead's Basin was established 6 March 1833 with Nathaniel Wilson as the first Postmaster. Other early Mead's Basin postmasters included Henry Doremus, and Isaac H. Mead (25 Mar 1833). The post office became part of Passaic County when that county was formed by Act of the New Jersey Legislature on 7 Feb 1837. The name was later changed to Mountain View, Passaic County, NJ.

MIDVALE A locality in Wanaque Borough.

MOE A locality in West Milford Township.

MORROW'S MILLS An early name for the locality now called Hawthorne. Named for the woolen goods mill established here sometime after 1816 by John Morrow. Also called Degray's Mills.

MOUNTAINVIEW A locality in Wayne Township. Earlier called Mead's Basin.

MOUNT WASHINGTON Great Notch in Little Falls.

NEWFOUNDLAND A locality in West Milford Township.

NORTH HALEDON A Passaic County borough formed March 20, 1901 from Manchester Township. Includes High Mountain.

NORTH PATERSON An early name for the locality now called Hawthorne.

NORTHWEST KILL The Passaic River.

NORWOOD An early name for the south part of Hawthorne.

NOTCH [THE] An early name for Totowa.

NOTCH BROOK A locality in Little Falls. In 1857 it was the focal point of a fresh-water pearl search that spread through the northeast.

OAK RIDGE A locality in West Milford Township.

OUGHVICKENON (See Acquackanonk)

OUCHQUIKENUNK (See Acquackanonk)

PACKANACK A locality in the vicinity of Wayne Township.

PACKANACK LAKE A locality in Wayne Township.

PACQUANAC An early name for the Mountain View section of Wayne.

PARADISE A locality in West Milford Township.

PASSAIC

(1) Passaic River. The name "Passaic" is supposedly Indian, meaning "where the water goes over the falls."

(2) Passaic County. Passaic County is a New Jersey County formed February 7, 1837 from Bergen and Essex Counties. It consisted of Acquackanonk, Manchester, Paterson, Pompton, and West Milford Townships. On October 28, 1907 part of Little Falls and Acquackanonk Townships transferred to Montclair town, in Essex County.

(3) Passaic Village. A community existed and was known by this name prior to its official formation on March 10, 1869 as a village

Passaic County Place Names *cont. from page 5*

within Acquackanonk Township. On March 21, 1871 Passaic Village was incorporated and set off from Acquackanonk Township. On April 2, 1873 Passaic Village became Passaic City. Earlier called Aquackanonk, then Huyler's in mid-1800s. Included Passaic Park.

(4) Passaic City formed April 2, 1873 replacing Passaic Village. In 1901 Passaic City exchanged small parts with Acquackanonk Township.

PASSAIC PARK A locality in Passaic City.

PATERSON A city in Passaic County, founded and incorporated on November 22, 1791 as "Paterson Town" by the Society for Establishing Useful Manufactures, and named for the New Jersey Governor at the time, William Paterson. Paterson Town was incorporated in 1791 within Bergen and Essex Counties. On April 11, 1831 Paterson Township was set off from Acquackanonk Township in Essex County, N.J. In 1837 Paterson Township was set off to Passaic County, and on April 14, 1851 the township became Paterson City. Paterson City was incorporated April 14, 1851 (referendum April 14, 1851) and replaced Paterson Township. In 1854 and again in 1855 it acquired area from Manchester Township. On March 14, 1861 it was reincorporated. In 1869 it acquired parts from Acquackanonk and Little Falls Townships. On March 23, 1871 Paterson City was again reincorporated. Because of its large textile industry and many silk mills, Paterson became known as "Silk City" and is often referred to as the Birthplace of the American Industrial Revolution. Earlier the vicinity was known as Great Falls. Includes or included Riverside and South Paterson.

PATERSON LANDING Passaic, N.J.

PAYQUANAC (possibly either Pequannock or Packanack?)

PECKMAN RIVER Located in the Little and Woodland Park area.

PINES LAKE A locality in Wayne Township.

POMPTON Pompton Township was organized February 8, 1797, formed April 10, 1797 from area taken from Saddle River and Franklin Townships in Bergen County. Pompton Township was incorporated February 21, 1798. In 1834 part of its area was set off to West Milford Township. On February 26, 1895 part of its area went to Pompton Lakes Borough. On February 23, 1918 Pompton Township was divided into Bloomingdale, Ringwood, and Wanaque Boroughs and the remainder went to Pompton Lakes Borough. Originally in Bergen County, all of Pompton Township in Bergen County became part of Passaic County on February 7, 1837. The name Pompton is said to come from an Indian word meaning sucking fish or place where they catch soft fish. An ironworks was begun here in 1726 or earlier, probably by members of the Schuyler family.

POMPTON JUNCTION A locality in Pompton Lakes Borough.

POMPTON LAKES Pompton Lakes Borough was formed February 26, 1895 from Pompton Township. Includes or included Pompton Junction.

POSTVILLE A locality in West Milford Township.

PREAKNESS A locality in Wayne Township near the Bergen County border. From an Indian word meaning young buck. The Preakness Reformed Dutch Church was established here in 1831. The Berdan family settled here by 1720.

PROSPECT PARK Prospect Park Borough was formed March 13, 1901 from Manchester Township.

RINGWOOD An ironworks was established at this locality in what is today Passaic County, N.J. by the Ogden family in 1742. Peter Hasenclever purchased the Ringwood Ironworks from David Ogden, Sr. and others in 1764 and brought more than 500 men from Germany to work the enterprise. Hasenclever ambitiously acquired about 50,000 acres, built furnaces, forges, roads, and dams, and purchased horses, oxen and implements in vast numbers. In 1767 new partners in the American Company Iron Works (of British ownership) discharged Hasenclever. Robert Erskine, known for his American Revolutionary era maps, became its manager in 1772. The area includes or included Conklingtown, Erskine Lakes, Hickory Mountain, Skyline Lake, and Stonetown. Ringwood Borough in Passaic County, N.J. was formed February 23, 1918 from Pompton Township.

SANDY HILL A section of Paterson in the vicinity of Eastside High School. At one time it was the location of the Sandy Hill Cemeteries, a complex of burial grounds maintained by various religious congregations.

SCHUYLERS A locality near Pompton. Its name is probably derived from the Schuyler family that lived in the area.

SCHUYLER'S BASIN An area probably in what is today Wayne Township or the south part of Pompton.

SINGAC A locality in Little Falls Township. The name is said to be Indian, meaning flat country or marshy meadow. On 10 June 1696, "Spring Brook or Singanck" was cited as a boundary in a confirmation of 240 acres to Anthony Brockholls and Arent Schuyler.

SKYLINE LAKE A locality in Ringwood Borough.

SMITHS MILLS A locality in West Milford Township.

SNUFFTOWN A locality in West Milford Township.

SOUTH CLOVE A location at Preakness. On 4 February 1803, cited in Bergen County Deed R:107 from Theunis Ryerson to Albert Berdan as "Ridge at west side of South Clove."

SOUTH PATERSON A locality in Paterson City.

STOCKHOLM A locality in West Milford Township.

STONETOWN A locality in Ringwood Borough.

TOTOWA A locality in what is today Passaic County. The name is supposedly Indian, meaning "land between river and mountain." The Totowa (Paterson) Reformed Dutch Church was established here in 1755. Totowa Borough, in Passaic County, N.J., was formed March 15, 1898 from Manchester and Wayne Townships.

TURKEY HILL A section of Paterson near Madison Avenue and Market Street.

UPPER MACOPIN A locality in West Milford Township.

UTTERTOWN A locality in West Milford Township.

VAN WINKLE A locality in Passaic County, N.J., near Manchester Township.

VOGELVILLE A location at the intersection of the Greenwood Lake Turnpike and Lakeside Road in West Milford, Passaic County, NJ. Named for Vogel's Store, a general store at the location around 1930.

cont. on page 7

Passaic County Place Names *cont. from page 6*

WAGARAW An area in or near Hawthorne. The Indian word may be from (1) “waaken,” meaning the place at the bend of the river (or “crooked place”) or (2) “Wogawi” meaning “around.” Various spellings include Wachra Brook, Waggereuw, Wegreuw, Wegruf, Wagharaw, Weghrauw, Wagrau, and Wagara.

WANAQUE A locality in what is today Passaic County, N.J. The Indian name Wanaque is said to mean “place of Sassafras.” Early spellings include Whynockie and Wynockie. Wanaque Borough was formed February 23, 1918 from Pompton Township and Pompton Lakes Borough. Includes or included Haskell and Midvale.

WAYNE Wayne Township was set off from Manchester Township on April 12, 1847 and named for Gen. Anthony Wayne. Includes Lower Preakness, Mountain View, Packanack Lake, Pines Lake, and Preakness.

WEASEL / WEESEL / WEEZEL (See Wesel)

WESEL An area in the southern part of the Paterson-Clifton vicinity in Passaic County, N.J. Said to have been named by settlers of the area who came from Wesel (pronounced “Weasel”) in Rhenish Prussia. Various spellings include Wezel, Weasel, and Weezel.

WEST MILFORD A locality in what is today Passaic County, organized in Bergen County as the Township of West Milford on February 25, 1834 (March 10, 1834) from Pompton Township. In 1837 West Milford was set off to Passaic County. Its name is derived from that of Milford, Connecticut, because some of its

first settlers came from that locality, via Newark, N.J. (which, for a time, was known as “New Milford”). West Milford was first called New Milford, but in 1828, with the establishment of a post office here, the name was changed to West Milford to differentiate between this community and the other “New Milford” established in Bergen County, N.J. Includes or included Apschawa, Awosting, Browns, Canisteer, Charlotteburg, Clinton, Clinton Furnace, Corterville, Echo Lake, Greenwood Lake, Hewitt, Lakeside, Long Pond, Lower Macopin, Macopin, Moe, Newfoundland, Oak Ridge, Paradise, Postville, Smiths Mills, Snufftown, Stockholm, Upper Macopin, and Uttertownt.

WEST PATERSON A borough in Passaic County formed March 25, 1914 from a section of Little Falls Township known as West Park. On November 4, 2008, the citizens of West Paterson voted to change the official name of the borough from West Paterson to Woodland Park.

WEZEL (See Wesel)

WHYNOCKIE Early spelling for Wanaque. The name is said to be Indian, meaning “place of Sassafras.” Also found written Wynockie, and Winochie.

WINOCHIE (See Wynockie)

WOODLAND PARK (See West Paterson)

WYNOCKIE (See Wynockie)

Genealogical Standards & Guidelines

Guidelines For Using Records Repositories And Libraries

Recommended by the National Genealogical Society

Recognizing that how they use unique original records and fragile publications will affect other users, both current and future, family history researchers habitually —

- are courteous to research facility personnel and other researchers, and respect the staff’s other daily tasks, not expecting the records custodian to listen to their family histories nor provide constant or immediate attention.
- dress appropriately, converse with others in a low voice, and supervise children appropriately.
- do their homework in advance, know what is available and what they need, and avoid ever asking for “everything” on their ancestors.
- use only designed work space areas and equipment, like readers and computers, intended for patron use, respect off-limits areas, and ask for assistance if needed.
- treat original records at all times with great respect and work with only a few records at a time, recognizing that they are irreplaceable and that each user must help preserve them for future use.
- treat books with care, never forcing their spines, and handle photographs properly, preferably wearing archival gloves.
- never mark, mutilate, rearrange, relocate, or remove from the repository any original, printed, microform, or electronic document or artifact.
- use only procedures prescribed by the repository for noting corrections to any errors or omissions found in published works, never marking the work itself.
- keep note-taking paper or other objects from covering records or books, and avoid placing any pressure upon them, particularly with a pencil.
- use only the method specifically designated for identifying records for duplication, avoiding use of paper clips, adhesive notes, or other means not approved by the facility.
- return volumes and files only to locations designated for that purpose.
- before departure, thank the records custodians for their courtesy in making the materials available.
- follow the rules of the records repository without protest, even if they have changed since a previous visit or differ from those of another facility.