



THE HISTORIC COUNTY

Volume 17 • Issue 4
Fall 2017

NEWSLETTER OF THE
PASSAIC COUNTY HISTORICAL SOCIETY

Bloomingtondale • Clifton • Haledon • Hawthorne • Little Falls • North Haledon
Passaic • Paterson • Pompton Lakes • Prospect Park • Ringwood • Totowa
Wanaque • Wayne • West Milford • Woodland Park

TEA SET'S CONNECTION TO FRENCH EMPRESS CLARIFIED

By Heather Garside

Many of the pieces in the Society's collection have complex and interesting provenances, which give these items a greater intrinsic value. However, the provenance of many of our items is undocumented and only known to us today through oral history and legend. One such intriguing mystery is the origin of our swan tea set. The tea set was part of a bequest by Helen Sterrett McBurney, the daughter of Catholina Lambert's business partner. Transferred to the Society in 1955 from her home in Atlanta GA, this seventeen piece set was said to have been owned by Empress Josephine Bonaparte.

While undocumented, this romantic connection to Josephine never seemed completely dismissible. Josephine's love of swans is well known. At her home in Malmaison, she was the first person to have success breeding black swans in captivity. At Bonaparte's Palace Fontainebleau, Josephine incorporated the swan as an emblem which she used to decorate her bedroom, the gardens and furnishings. Considering the large collection of swans at the Palace, one can see our tea set fitting in quite well.

The question of how the tea set crossed the pond and entered the United States could also be explained. Several members of the Bonaparte family were familiar to America in the early 1800s. Indeed, Napoleon's younger brother Jerome was married to an American in 1803. The subsequent emigration of several members of the family following the Emperor's fall from power, including his brother Joseph's relocation to Point Breeze NJ, certainly makes the tea set's journey seem plausible.



Madame Bonaparte dans son salon de Malmaison.
Painted by François Gérard, 1770-1837.

Source: http://hermitage.internet.emax.ru/hermitage/html_Ru_/04/2003/hm4_1_56_2.html

However, new information has recently been uncovered, which has provided some insight into the provenance of these remarkable porcelain artifacts. The tea set was created in the Dagorty porcelain factory of Paris. Founded in 1798 by three brothers, the factory received a charter from Empress Josephine around 1800. The charter authorized Pierre-Louis (the sole owner of the business at this time, both his brothers

Continued on page 4

**PASSAIC COUNTY
HISTORICAL
SOCIETY**

LAMBERT CASTLE

3 Valley Road
Paterson, NJ 07503-2932

Museum: (973) 247-0085

Fax: (973) 881-9434

E-mail: info@lambertcastle.org

Website: lambertcastle.org

OFFICERS

Michael Rubin
President

Linda Kaplanovich
First Vice President

Robert Hazekamp
Second Vice President

Cathy Tonnon
Treasurer

Maria Caparelli
Secretary

TRUSTEES

Dorothy Andrusko

Catherine Cavallo

Andrea De Luca

Kenneth Donnelly

Edwina Hibel

William Liess

Marie Mahler

Helen Mault

Phil Mezzina

Barbara Novak

Vivian Semeraro

Robert Vermeulen

**HONORARY LIFE
TRUSTEES**

Norman Robertson

Edward A. Smyk

HONORARY TRUSTEE

Hazel Spiegelberger

STAFF

Heather Garside

Director and Curator

Dorothy Decker

Janet Wasti

Administrative Assistants

Henrietta Weiss, *Head Docent*

Megan Crosby, *Docent*

Ada Iacovone, *Docent*

Patrick Byrnes

Library Research Specialist

Boris Von Faust

Digitization Specialist

Lambert Castle, a picturesque 1892 Victorian mansion located on the Garret Mountain Reserve, is on the National Register of Historic Places. The Castle is operated and managed by the Passaic County Historical Society, a not-for-profit 501(c) educational institution.

CALENDAR OF EVENTS

Visit lambertcastle.org for the most up-to-date event information.

- November 1** **Quarterly Meeting.** 7 p.m. Louis Bay II Library, Hawthorne. Business meeting of the Society followed by a presentation by author Rick Geffken about his newest publication *Lost Amusement Parks of the North Jersey Shore*. Geffken and his co-author George Severini used their publication to bring together rarely seen images from the Library of Congress, local historical societies, and private collections to document how the Jersey Shore became the most famous vacation and recreational destination in the coastal United States. Copies of the book will be available for purchase. The program is free and open to the public.
Wednesday
- November 3** **Lambert Castle Holiday Boutique - Wine and Cheese Preview Night:** 5p.m.-10p.m. at Lambert Castle. Usher in the Holiday Season with us. Enjoy wine and snacks as you preview the goodies at this year's Holiday Boutique. Tickets are \$15 (includes two return visits). Reserve tickets to guarantee admission.
Friday
- November 4-5** **Lambert Castle Holiday Boutique Opening Weekend.** The boutique offers shoppers an assortment of festive holiday gifts, jewelry, seasonal decorations, crafts, collectibles and gourmet food in the historic atmosphere and ambiance of Lambert Castle. Join us opening weekend. Doors open 10 a.m. to 5 pm. Opening weekend admission is \$7, including two return visits.
Saturday & Sunday
- November 8-26** **30th Annual Lambert Castle Holiday Boutique.** Open Wednesday through Friday 10 a.m. to 8 p.m., Saturday and Sunday 10 a.m. to 5 pm. (Closed Thanksgiving Day). No strollers or carriages, please. Admission is \$6 and includes two return visits.
- November 11** **Genealogy Club Meeting** 10am. Held at the North Jersey Federal Credit Union, 711 Union Blvd. Totowa. *Emerald Isle Express: Researching Irish Ancestors* presented by Rich Venezia, a professional genealogist who is a member of the Genealogy Roadshow research team. Discover the variety of Irish record sets available, new ideas for determining an Irish place of origin, and how to learn the stories of your Irish Ancestors.
Saturday
- December 9** **Genealogy Club Meeting.** 10am at Lambert Castle. *Holiday Continental Breakfast and Silent Auction.* Please bring your gently used items (in excellent condition, of course) purchase something new or re-gift an unwanted item. Whatever you donate to the auction will be much appreciated and will add to the fun. Reservations required, members free.
Saturday
- December 10** **Storytelling and Sing-along with Santa and Mrs. Claus.** 1 p.m.- 3p.m. Join us as Santa and Mrs. Claus visit Lambert Castle to tell some stories and sing some holiday songs. Recommended for children under 10 years old. Tickets \$15 for one adult and one child. Each additional adult or child is \$5. Limited seating, reservations required. Call (973)247-0085 ext. 201 for reservations.
Sunday
- December 13 - January 7** **Lambert Castle Holiday Tours** 1 p.m. - 4 p.m., Wednesday-Sunday. Take a tour around Lambert Castle and see the rooms decorated for the holidays. Regular admission fees apply.
- January 13** **Genealogy Club Meeting.** 10am at Lambert Castle. *Genealogy Exchange.* Bring your special family photos, keepsakes and other treasures to share with members and other guests.
Saturday
- February 1** **Quarterly Meeting.** 7 p.m., at Lambert Castle. Business meeting of the Society followed by a historical program. Program to be announced. Free and open to the public. Visit Lambertcastle.org/upcomingevents for more details.
Wednesday
- February 9** **Valentine's Day Masked Ball at Lambert Castle.** 7p.m.- 11 p.m. Don a mask and join us at Lambert Castle for some dancing, light refreshment, Cash Bar. Semi-formal attire requested. Tickets \$25 per person. No one under twenty-one years will be admitted. Reservations required. Call (973)247-0085 ext 201.
Friday
- February 10** **Genealogy Club Meeting.** 10am at Lambert Castle. *Ask the Questions- Informal Workshop.* Are you just beginning, need to organize your files, find different type of records, learn to utilize genealogy sites. Several stations will be setup around the room for our seasoned genealogists to assist you with your questions.
Saturday

A NOTE FROM THE EDITOR

You may have noticed that this newsletter is larger than recent issues. That is because we are trying a new approach to our publications. In the past our members received four newsletters from the Society and four from the Genealogy Club each year. Starting with Vol 17, Issue 4, we have merged the two newsletters into a single communication. Moving forward, you can expect four newsletters. Rest assured, the quality and quantity of the content have not changed! Both sections of the newsletter will continue to provide you with the historical and genealogical themed articles you love and the information that keeps you in the know regarding our upcoming events. You can find the Castle Genie by turning to page 6. We hope you enjoy this expanded format.

INITIATIVE TO RESTORE PAINTINGS UNDERWAY

If you have visited the Castle this summer, you may have noticed a few blank spaces on the wall. Have no fear, the missing paintings will not be gone for long! They are simply out for restoration.

In April of 2017, the Board of Trustees approved a proposal presented by the collections management committee to restore several of our oil paintings and their frames, currently on display throughout the museum. The project was spearheaded by Passaic County Historian and Trustee Ed Smyk, as a precautionary measure. The Society is partnering with Gate House Galleries Conservation Laboratory in Pompton Plains, the same restorers who worked with PCHS on the Adopt A Painting Project in the 1990s.

The sixteen paintings selected require minor repairs and maintenance as a means to forestall greater damage. The project, which is being funded through the bequest left by Lillian Jean Wardle in 2012, has been scheduled so that only a few paintings are out to be conserved at one time, allowing the atmosphere of the museum to remain unaltered.

The collections management committee hopes that upon the completion of this first phase additional pieces, (many currently in storage), will be scheduled for repair next and placed on exhibition at the Castle.

SHAKESPEARE AT THE CASTLE

This July visitors to Lambert Castle were again transported back in time as the Historical Society collaborated with Action Theatre Conservatory Studio (ATC) of Clifton to present *Shakespeare at the Castle*. In 2017 we marked the fourth year of our partnership with ATC Studio for this outstanding program. Instead of excerpts from a variety of plays, this year's indoor and outdoor performances featured *A (Mini) Midsummer Night's Dream*, an abridged version of the Bard's famous comedy. Partial funding for this program was provided by the Passaic County Cultural and Heritage Council's Art Re-grant program.



The 2018, performances are scheduled to take place July 20-21. In an effort to keep things fresh and new, we plan to add a fourth performance to the schedule. Held outside on Friday afternoon, this free performance will be a matinee for children, focused toward clubs, summer programs and camps in the area. We hope this performance will provide an additional opportunity to introduce local children to Shakespeare and Lambert Castle.

Be sure to mark your calendars because you do not want to miss this amazing event!



TEA SET'S CONNECTION Cont.

having recently died) to sign his work, "Her Majesty Empress' Factory, P-L. Dagoty in Paris."

Besides the tea set in our collection, the Dagoty catalogue included many pieces incorporating a swan or swans into the decoration. This was no doubt a tribute to the Empress, as well as a reminder to both customers and competitors of Dagoty's imperial connections. With Josephine's divorce in 1810 and Napoleon's fall from power in 1814, the factory lost its imperial charter. In 1816 Pierre-Louis teamed up with Edouard Honoré, who remained his partner until 1820. Dagoty's factory was sold in 1823.

Based on the markings on the base of the PCHS tea set, which read "Manufacture de S.M. l'Impératrice, P.L. DAGOTY A. PARIS," our set dates to imperial production, sometime between 1804-1814. A matching tea cup and saucer can be found in the collection of Musee National du Chateau de Malmaison, France, home of the Napoleonic National Museum. Therefore, our tea set was never owned or used by Josephine Bonaparte. It was however, designed with her tastes in mind.

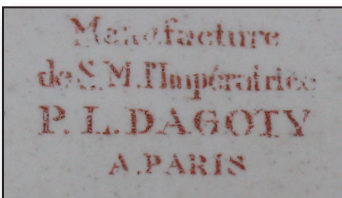


Self Portrait, 1798.

Painted by Pierre-Louis Dagoty (1771-1840)

Source: <https://commons.wikimedia.org/wiki/File:DAGOTY-Pierre-Louis.jpg>

Close up view of the maker's mark found on the bottom of each piece.



Swan Tea Set.



Sources

Manufacture de Dagoty

<http://www.paulbert-serpette.com/en/topics/makers-designers-artists/manufacture-de-dagoty>

Empress Josephine at Château Malmaison - Woman of Influence by Carolyn McDowall

<http://www.thecultureconcept.com/empress-josephine-at-chateau-malmaison-woman-of-influence>

Musee National du Chateau de Malmaison & Bois-Preau

<http://musees-nationaux-malmaison.fr/chateau-malmaison/>

V&A Search the Collections

<http://collections.vam.ac.uk/item/O99664/plate-honore-edouard-d/>

The British Museum- Research- Dagoty's Factory (Biographical details)

http://www.britishmuseum.org/research/search_the_collection_database/term_details.aspx?biold=88803

LAMBERT CASTLE HOLIDAY BOUTIQUE

CELEBRATING 30 YEARS: THE PASSAIC COUNTY HISTORICAL SOCIETY MARKS THE MOMENTOUS ANNIVERSARY OF A NORTH JERSEY HOLIDAY TRADITION

For ten months out of the year Lambert Castle is the home of the Passaic County Historical Society. In residence are thousands of artifacts documenting the rich history and culture that represents Passaic County, New Jersey. However, in October and November something unusual, one might even say magical, happens. At the end of September the museum shuts its doors for a month. The collections and exhibitions are safely tucked away and the Castle is transformed into a holiday wonderland.

As the largest craft fair in Northern New Jersey, the Lambert Castle Holiday Boutique is a ritual to many a shopper. The show has become part of many families' holiday tradition. And well it should! Since the first Holiday Boutique hosted by the Passaic County Historical Society in 1987, it has grown to occupy all three floors of this historic building.

Each room offers shoppers a new genre of merchandise to browse. The Boutique has it all: ornaments, jewelry, scarves and hats, sports memorabilia, stocking stuffers, candles, candy, dips, antiques and much more! The Castle Cafe on the third floor (run by the Hot Dog Caboose of Midland Park) allows patrons a chance to consider purchases over lunch or a piece of pie. To say that each year the show is different is an understatement. Each week the show is different as vendors deliver new items for the shelves. For just this reason many visitors take advantage of the two return visits that accompany their ticket.

While this year's show includes over 160 vendors and the Historical Society expects upwards of 10,000 visitors in

November, the show had modest beginnings. Originally known as the Holiday House Boutique, the show was founded by Nancy Davis of Glen Ridge, NJ. For many years she hosted the craft show in her own home, hence the name. But soon the show grew too

large for her house, so in 1987 she brought it to Lambert Castle and a partnership with Passaic County Historical Society was born.

The partnership between Ms. Davis and the Historical Society proved strong. Over the next twenty-five years, the Holiday Boutique grew into the Historical Society's largest fundraiser. With

Ms. Davis's untimely passing in 2013, the Historical Society decided to carry on with the show and preserve her legacy. Thus, in 2013 the Holiday House Boutique became the Lambert Castle Holiday Boutique.

Over the years there have been many changes. Added rooms and new themes,

new vendors and different merchandise. However, the focus on quality and a positive shopping experience remains the same. Some of our vendors and staff, including the Show Manager Lorie Behr- Kotora, have been with the show though the Davis years. This

continuity has helped the Boutique to retain its essence, spirit and uniqueness through the transitions.

The Passaic County Historical Society invites you the help mark this momentous occasion and celebrate the season by visiting the Lambert Castle Holiday Boutique November 4 through 26, 2017.

COME EXPERIENCE THE MAGIC IN PERSON.





THE CASTLE GENIE

NEWSLETTER OF THE PASSAIC COUNTY
HISTORICAL SOCIETY GENEALOGY CLUB

Lambert Castle, Paterson, New Jersey

Vol. 24, No. 4 • Fall 2017

Genealogy 101: Local Histories

By Gena Philibert-Ortega for GenealogyBank.com
(Reprinted with permission)

Introduction: In this article – part of an ongoing “Introduction to Genealogy” series – Gena Philibert-Ortega writes about a family history source often overlooked by genealogists: local histories, also referred to as county histories or “mug books.” Gena is a genealogist and author of the book “From the Family Kitchen.”

Local histories, also referred to as county histories or “mug books,” can provide much-needed family history clues for genealogists. These books were first published in the 1800s and continue to the present day. Information found in family or individual biographical sketches can include names, relationships, family history, occupational history, migration and more.

WANTED

WANTED. — Three or Four good Agents, of unimpaired reputation capable of gathering and preparing history, to take orders for the new County History. None but good, active men wanted.
Apply to
**A. A. GRAHAM, Manager,
Newark,**

Somerset Press (Somerset, Ohio), 3 November 1881, page 3

Aside from the biographical information they provide, author Val D. Greenwood in his book *The Researcher's Guide to American Genealogy* points out that local histories:

“...provide useful information on the settlement patterns of the locality and on the origins of settlers. They tell of religion, economics, education, and social conditions which might affect research procedures and direction. They tell of geography and terrain, water courses, and their effects upon settlement and population.”

Some People Paid to Be Featured

One of the criticisms of these mug books is that the people featured paid a fee to be prominently covered. While in some cases this was true, it was not true of everyone, since profiles of pioneers long deceased, and unflattering descriptions of some individuals, do exist. In any case, the information in these county histories can be a great help to your family history research.

One way that publishers of these books made money was by

pre-selling copies of the work. Salesmen would go door-to-door and collect money from those interested. “Subscribers” were promised a book that not only looked good but included information they would want – like a history of the area, maps, and biographical sketches of prominent citizens.

Not everyone who prepaid for these books was happy with the end result, as reported in this 1880 newspaper article about a lawsuit that was filed against subscribers who refused to take the book because it did not contain pioneers and prominent men as promised – but instead primarily featured men who paid for their inclusion. The article states:

“It was not a history of Western Massachusetts, but only an advertisement of persons who paid to be noticed. It promised detailed maps and there was not one as large as a finger nail.”

The Cumberland County History.

A suit is now on trial at Springfield, Mass., against subscribers to the “Cumberland Valley History,” who refused to take it after subscribing for it. The work is issued by Messrs. Everts and Peck, who issued the Cumberland County History. The defence is that the book is not such as it was represented that it should be. Mr. Stearus, in opening the defence, said he proposed to show that the subscriptions to the history were obtained by a system of lying frauds; that it was represented to be a history of prominent persons and things that the sub-

Portland Daily Press (Portland, Maine), 17 March 1880, page 3

Those past accusations serve as an important reminder for today's researchers. Because the information found in a county history does not include source citations, it should be taken with extreme caution. Use this information only as a starting point; make sure to double check all facts with original documents.

Example: Dauphin County, Pennsylvania, History

This 1893 newspaper article refers to a county history book scheduled to be published in 1896 that was to contain *“...a treasury of biographical sketches and history incident thereto that will be of much value. The work will be introduced with a condensed history of the county, of the course and movements which lead its early settlement; of the experience of the pioneer, in the wilderness; of the introduction of industries, schools and churches; of the development of progress of*

numerous enterprises and improvement, etc. ...The encyclopedia will contain personal sketches of old settlers and prominent and representative citizens of to-day."

DAUPHIN COUNTY HISTORY.

An Encyclopedia of Valuable Information in Course of Preparation.

A biographical encyclopedia should be an entertaining book; as one of reference it ought to be a valuable book. Some of them are neither. They should by their sales remunerate both publisher and compiler. Some are profitable to the publisher because they are of value to the purchaser. They may bring good returns to the publisher because they are padded with engravings of men and properties that pay roundly for their presentation, or give long and flattering sketches of men whose purses are long and they empty out their shekels in return for fulsome flattery and gratified pride. A

Patriot (Harrisburg, Pennsylvania), 2 March 1893, page 6

The published work contained not only histories of families, but lists of early settlers and some of their images. You can read the book, *Commemorative Biographical Encyclopedia of Dauphin County, Pennsylvania, Containing Sketches of Prominent and Representative Citizens and Many of the Early Scotch-Irish and German Settlers*, on the digitized book website Internet Archive.

County Histories as Genealogy Tools

Some things to consider when using a county history:

- Your direct ancestor may not be featured, but look for other relations like a parent or in-law.
- Books were not limited to just a county – some featured several neighboring cities or a region (for example, Western Maryland or Wellfleet and Maywood, Nebraska).
- County histories, like city directories, can provide information about businesses, local governments, and churches.
- Maps and images may be included.
- More than one history of a county may have been published over the span of 100 or more years.

Where to Find Local Histories

Luckily for the modern family historian, local histories can be found online and in libraries. For online copies, look on digitized book websites like Google Books, Internet Archive, and Hathi Trust. FamilySearch's Family History Books should also be searched, as well as the FamilySearch Catalog. Remember that FamilySearch's Family History Books includes not only digitized books from the FamilySearch collection, but also partnering repositories.

To find possible copies of a county history in a library, search on WorldCat for the name of the county you are researching. This will assist you in finding copies in libraries worldwide that might be borrowed through interlibrary loan. You can also consult the P. William Filby book, *A Bibliography of American County Histories*, for a list of titles.

Finally, don't forget about historical newspapers in your search for county histories, such as those contained in Genealogy-Bank's Historical Newspaper Archives. Searching on the name of the county or the phrase "county history" in the newspapers that served that area might reveal plans for publishing such a work, and information that was printed.

* Greenwood, Val D. *The Researcher's Guide to American Genealogy*. 3rd Edition. Baltimore, Maryland: Genealogical Publishing Co. (2013), p. 184.

Family History Microfilm Loan Discontinued

On September 7, 2017, FamilySearch discontinued its microfilm circulation services.

The Church of Latter Day Saints has digitized 1.5 million of the 2.4 million rolls of microfilm that are held at their Granite Mountain Vault. The plan is to have the remaining microfilm digitized by the end of 2020. New digital images will be made available as they are scanned on FamilySearch.org.

Some of the reasons for discontinuing the current program are:

- scarcity of blank microfilm. There is only one manufacturer of microfilm left. The cost of a blank roll is \$85. Considering that FamilySearch charges only \$7.50 per roll to borrow, costs quickly add up.
- when an image is online, it can be viewed by anyone with access to the Internet, whereas a microfilm can only be viewed by one person at a time and only in specific locations.
- Maintaining microfilm readers has become a problem because of age and difficulty in finding replacement parts

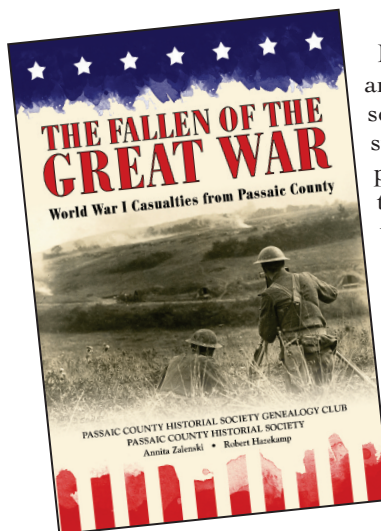
Family history centers, including affiliate libraries, may retain their microfilm collections already on loan from FamilySearch. All microfilm currently in circulation will be converted to an extended loan. Additionally, recent changes now make it possible to view many formerly restricted images in affiliate libraries as well as local family history centers.

FamilySearch is a global leader in historic records preservation and access, with billions of the world's genealogical records in its collections. This change is the result of significant progress made in microfilm digitization efforts and the obsolescence of vesicular microfilm as an access medium.

Centers have the option to return microfilm that is available online or otherwise not needed. As more images are published online, centers may reevaluate whether to retain microfilm holdings.

Passaic County Historical Society Genealogy Club Presents It's Newest Publication

THE FALLEN OF THE GREAT WAR World War I Casualties from Passaic County



Every Soldier, Sailor, Marine, and Red Cross Nurse who served in World War I has a story worth telling. This 200 page compilation is an attempt to identify and pay homage to those from Passaic County, who lost their lives during the "War to End all Wars."

\$15.00

plus \$6.00 shipping (USA only).



PASSAIC COUNTY HISTORICAL SOCIETY

Lambert Castle, 3 Valley Road
Paterson, New Jersey 07503

NONPROFIT ORG.
U.S POSTAGE
PAID
PATERSON, NJ
PERMIT NO. 132

*30th
Anniversary*

PASSAIC COUNTY HISTORICAL SOCIETY PRESENTS

LAMBERT CASTLE

Holiday Boutique

3 VALLEY ROAD, PATERSON-CLIFTON BORDER

NOVEMBER 4~26, 2017

WEDNESDAY THRU FRIDAY • 10AM~8PM

SATURDAY & SUNDAY • 10AM~5PM

CLOSED MONDAY, TUESDAY & THANKSGIVING DAY

VISA/MASTERCARD ACCEPTED FOR PURCHASES • NO PERSONAL CHECKS ACCEPTED
CHILDREN UNDER 12 FREE • NO CHILD STROLLERS PERMITTED

WINE & CHEESE PREVIEW NIGHT • NOVEMBER 3, 2017

*Festive
Holiday Gifts
Handmade Seasonal
Decorations Quality Crafts
Collectibles Jewelry and
Gourmet Foods*

**\$6
ADMISSION/DONATION.**

**OPENING
WEEKEND
NOVEMBER 4TH & 5TH
\$7 ADMISSION/
DONATION**

BENEFITS
PASSAIC COUNTY HISTORICAL SOCIETY
AT LAMBERT CASTLE
A NOT-FOR-PROFIT 501(C)3
EDUCATIONAL
INSTITUTION.



ALL TICKETS INCLUDE 2 RETURN VISITS